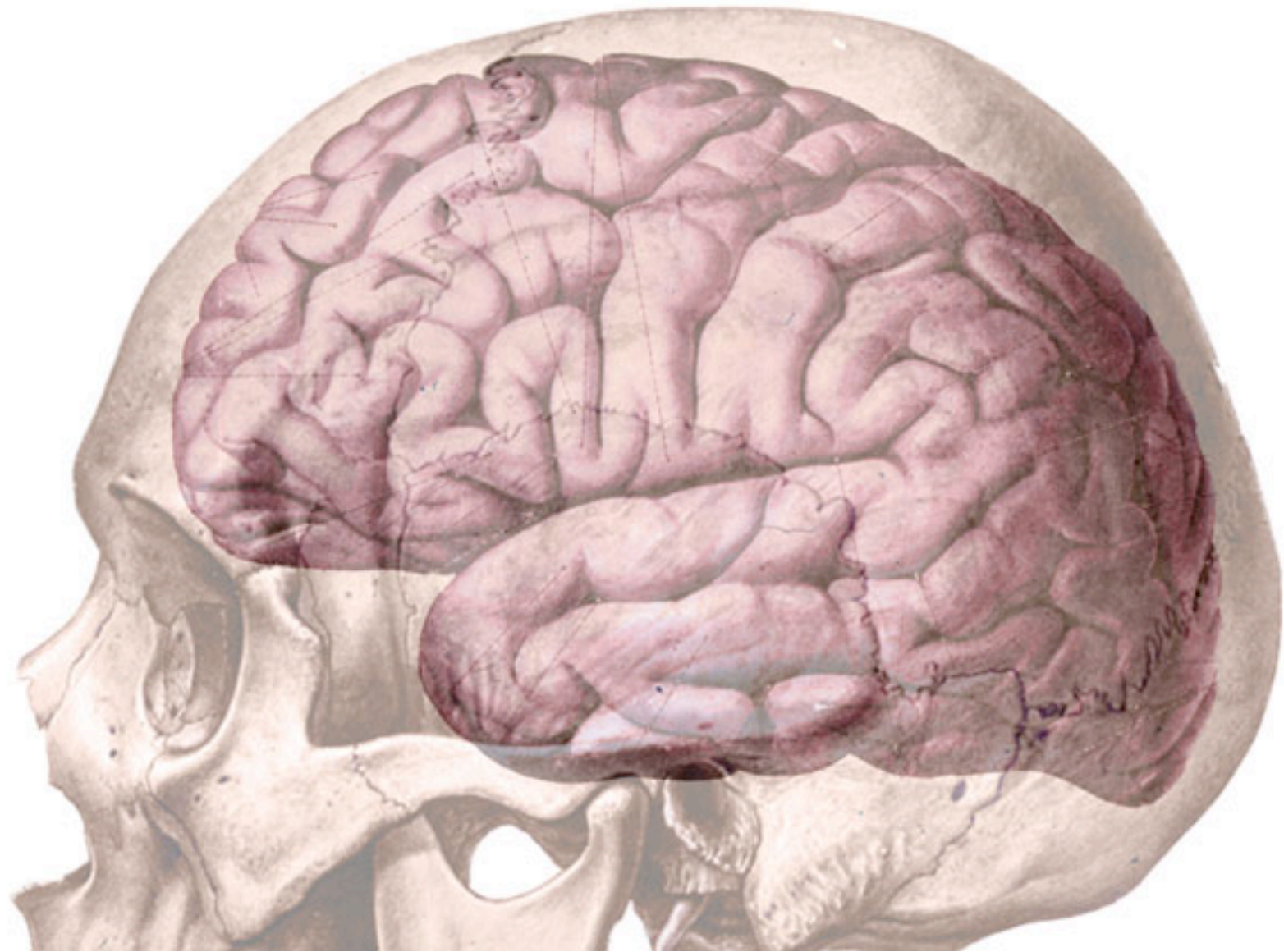


A215 Lab

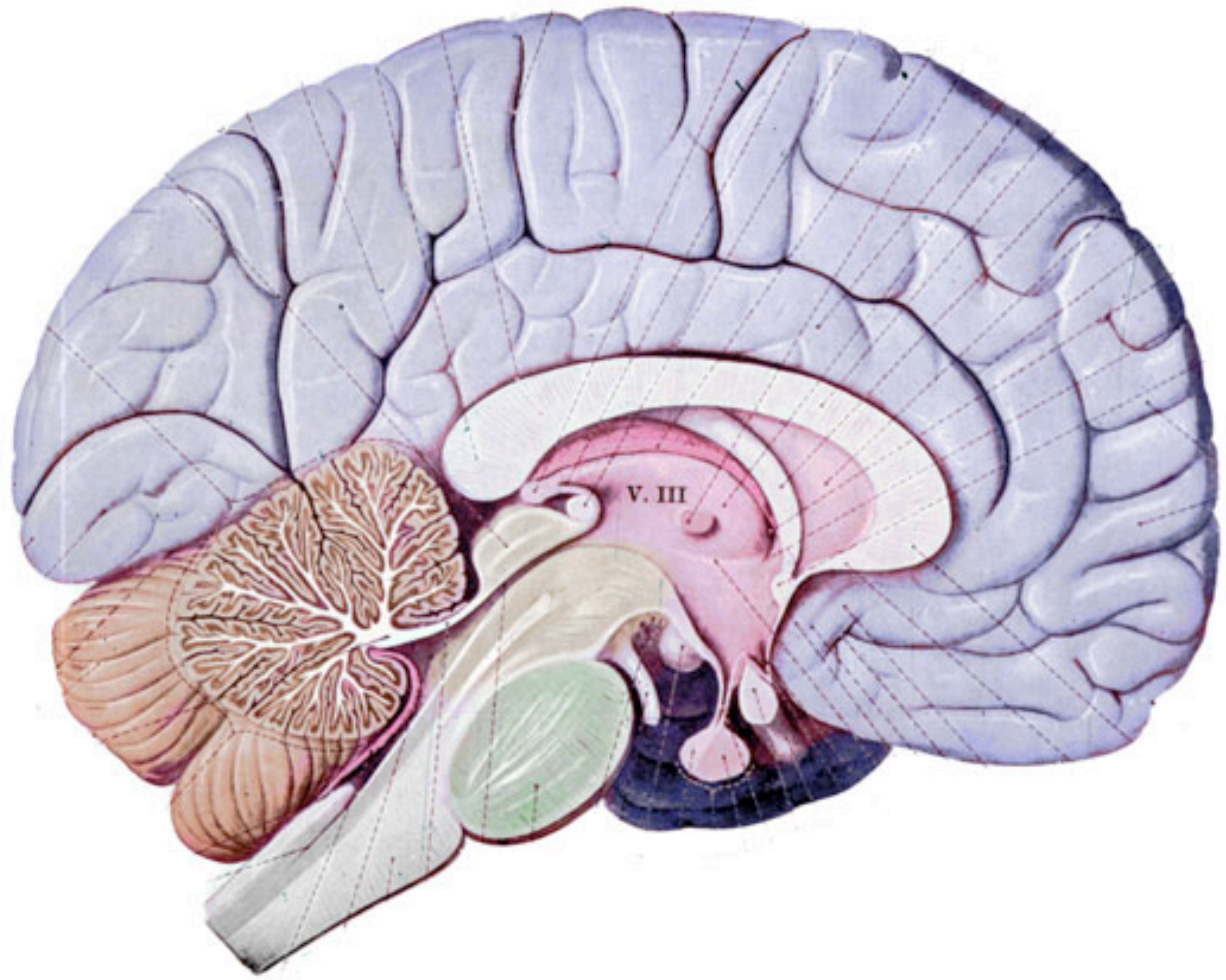
Nervous: CNS-3 (Brain)



Subdivisions of the Brain

- Cerebrum
- Diencephalon
- Mesencephalon
- Cerebellum
- Pons
- Medulla oblongata

What structures does each subdivision include?



CSF filled spaces

- Ventricles
 - 3rd - bounded by thalamus on the side and hypothalamus at its base
 - 4th - tent-shaped cavity within pons and medulla oblongata
 - lateral - one within each hemisphere of cerebrum
 - mesencephalic aqueduct - connects 3rd & 4th