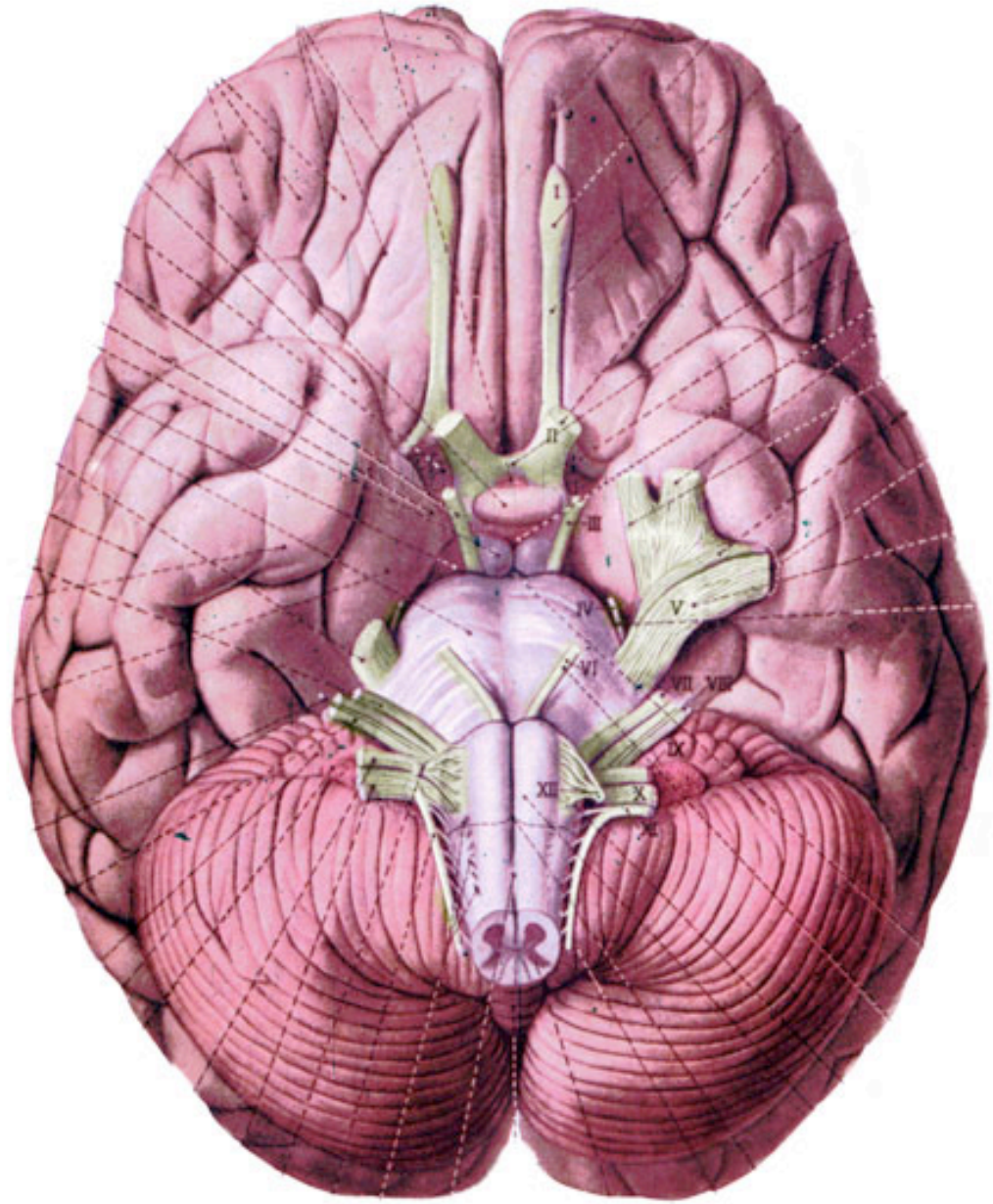


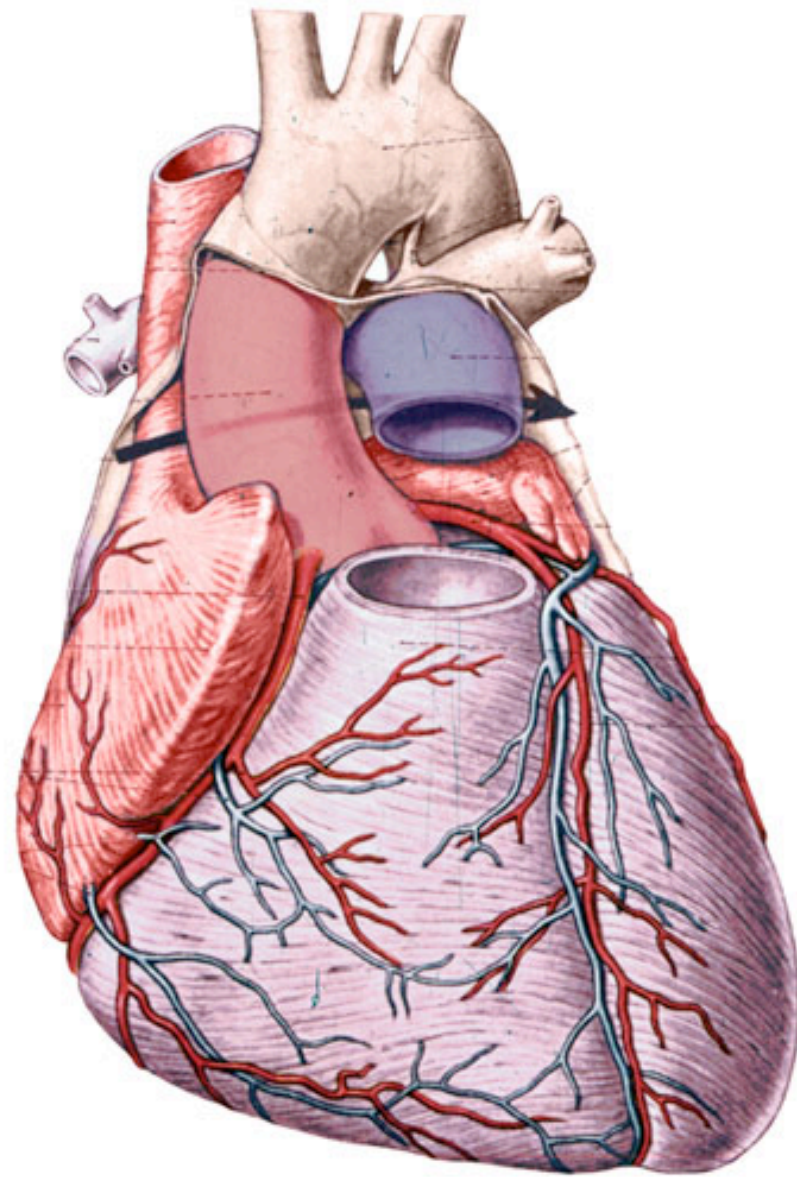
A215 Lab

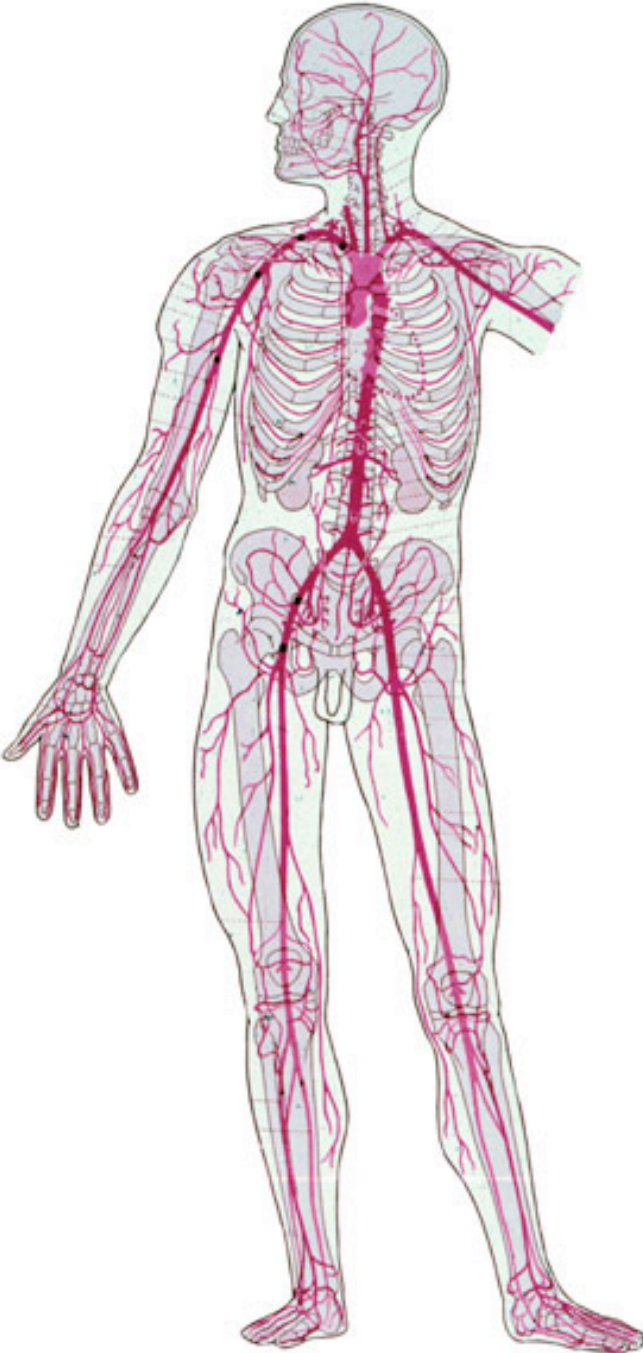
Nervous: Cranial Nerves;
Circulatory: Vessels-1

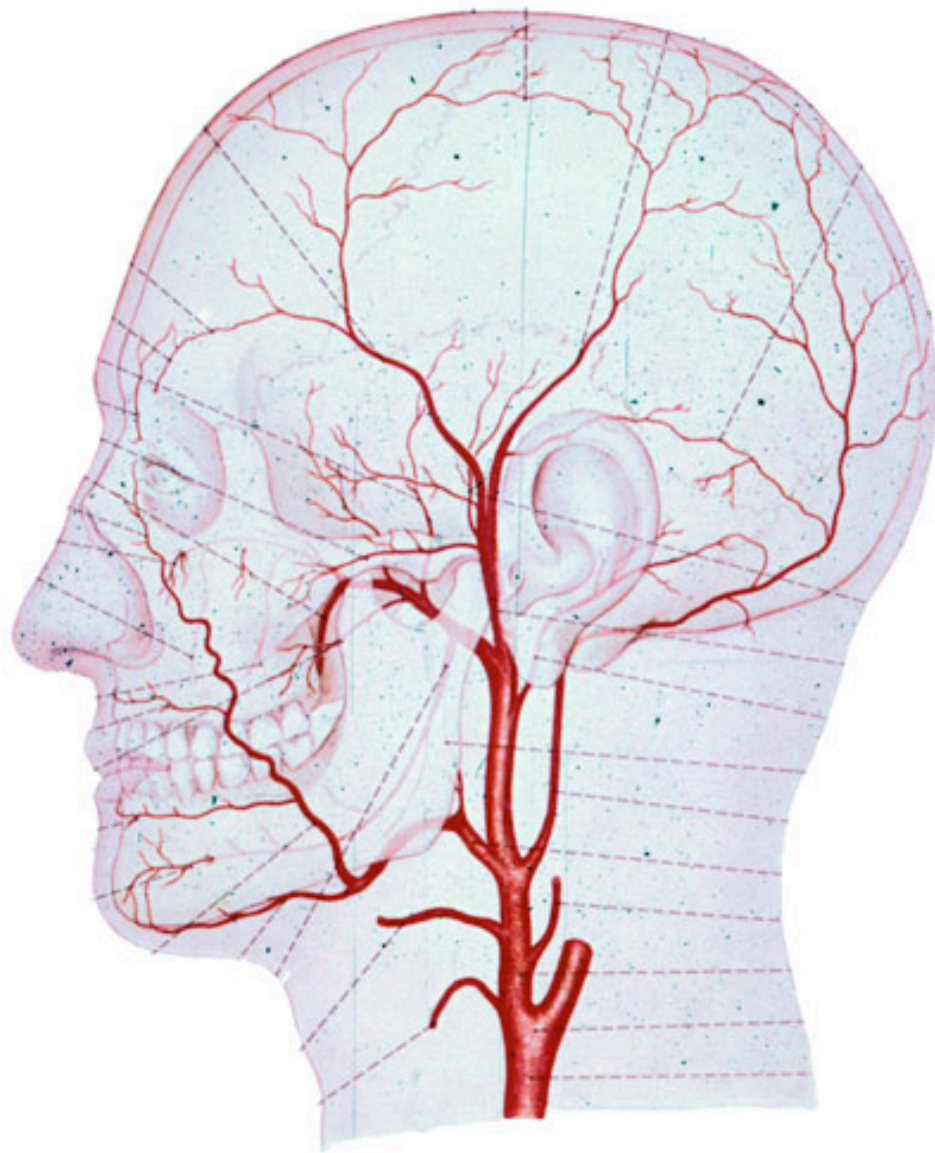


Circulatory Vessels

- Arteries
 - Carry blood away from the heart
 - muscular, round
- Veins
 - Return blood to heart
 - thin, collapsed







Cranial blood supply

- Arterial
 - Circle of Willis
 - series of arteries
 - Basilar Artery (1)
 - Vertebral Arteries (2)
- Venous
 - Dural Venous Sinuses

