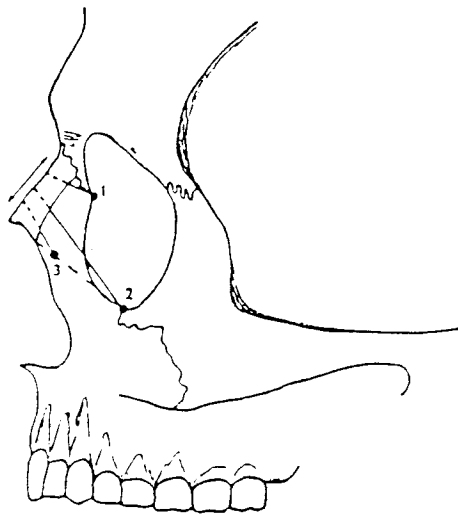


a



b

- 1 Maxillofrontal breadth--breadth between maxillofrontale left and right (often called interorbital breadth).

Maxillofrontale is defined by Bass (1987:60) as the intersection of the fronto-maxillary suture and "anterior lacrimal crest, or the crest extended (medial edge of the eye orbit)". See points 1 in Figure a.

Naso-maxillofrontal subtense -- projection, or subtense, from the maxillofrontal points to the deepest point on the nasal bridge. This is not a precise point, but is the point at which a minimal reading is obtained on the vertical scale of the simometer. Note the line from point 1 to the nasal bridge (Fig. b).

- 2 Mid-orbital breadth -- the breadth between zygorbitale left and right.

Zygorbitale is defined by Howells as "the intersection of the orbital

margin and the zygomaxillary suture" (Howells 1973:170). Occasionally the suture meanders along the orbital border; then its most medial location is chosen as zygorbitale (See points 2, Fig. a).

Naso-zygoorbital subtense-- subtense (projection) from the zygoorbital points to the deepest point along the nasal bridge. The deepest point is again instrument determined. Note the line from point 2 (Fig. b)

- 3 Alpha cord -- the breadth between the alpha points right and left.

Point alpha is the deepest point, left and right on the maxilla along a line from zygoorbitale to the point where the naso-maxillary suture meets the nasal aperture (note points 3, Fig. a). To determine alpha, a straight line is pencilled connecting the above two points, and the skull tilted until the profile of a straight-edge and the pencilled line are clearly visible. The deepest point is then marked along the pencilled line. The deepest point usually coincides with a depression or "break" where the maxilla begins to rise anteriorly toward the nasal aperture. When a definite break or depression is not visible along the pencil line, but instead the concavity forms a long gradual shallow depression in profile, a deepest point is difficult to determine. Then the mid-point along the pencilled line is chosen.

Naso-alpha subtense -- projection (sustense) from the alpha points to deepest point on the nasal bridge. The deepest point here is instrument determined also. Note the line from point 3 (Fig. b).

Definitions adapted from the following:

Bass, William M.

1987 Human Osteology. Missouri Arch. Society, Columbia, MO.

Gill, George W.

1984 A Forensic Test Case for a New Method of Geographical Race Determination. In Rathbun, T. & J. Buikstra, eds., Human Identification. Charles C. Thomas, Springfield, Ill.

Gill, George W., Susan S. Hughes, Suzanne M. Bennett and B. Miles Gilbert

1988 Racial I.D. from the Midfacial Skeleton..., Journal of Forensic Science, 33.

Howells, W.W.

1973 Cranial Variation in Man. Papers of the Peabody Museum of Archaeology & Ethnology., Harvard University, 67.