

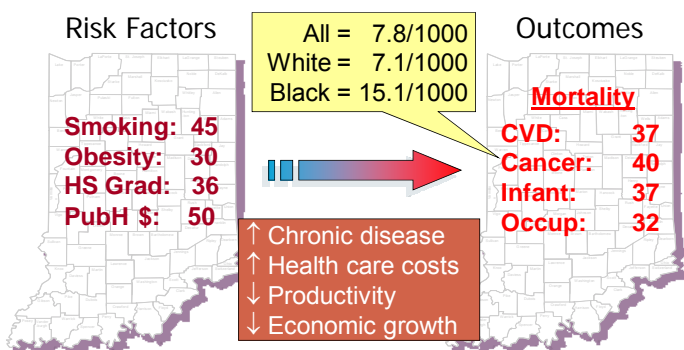
**Presentation to BFC: IUB School of Public Health  
Dean Robert M. Goodman, Ph.D., MPH, MA  
October 20, 2009**

Background - Demographic

- 6<sup>th</sup> worst state in overall well-being (Gallup Wellness Survey, 2009)
- 49<sup>th</sup> in public health funding (Trust for America's Health, 2009)
- Public health personnel/100,000 population:
  - national average=138;
  - DHHS Region V (Midwest)=76;
  - Indiana=46
- \$26.8 Billion: Indiana avoidable treatment and lost productivity costs, 2003-2023 (Milken Institute, 2007)



**Why Schools of Public Health?**

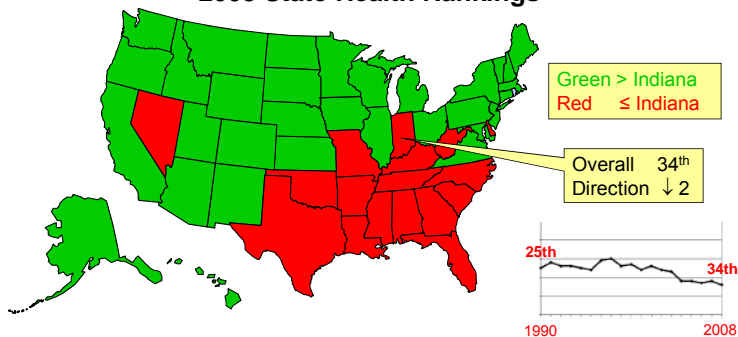


United Health Foundation. *America's Health Rankings*, 2008  
The Henry J. Kaiser Family Foundation, 2009



**Why Schools of Public Health?**

**2008 State Health Rankings**



United Health Foundation. *America's Health Rankings*, 2008

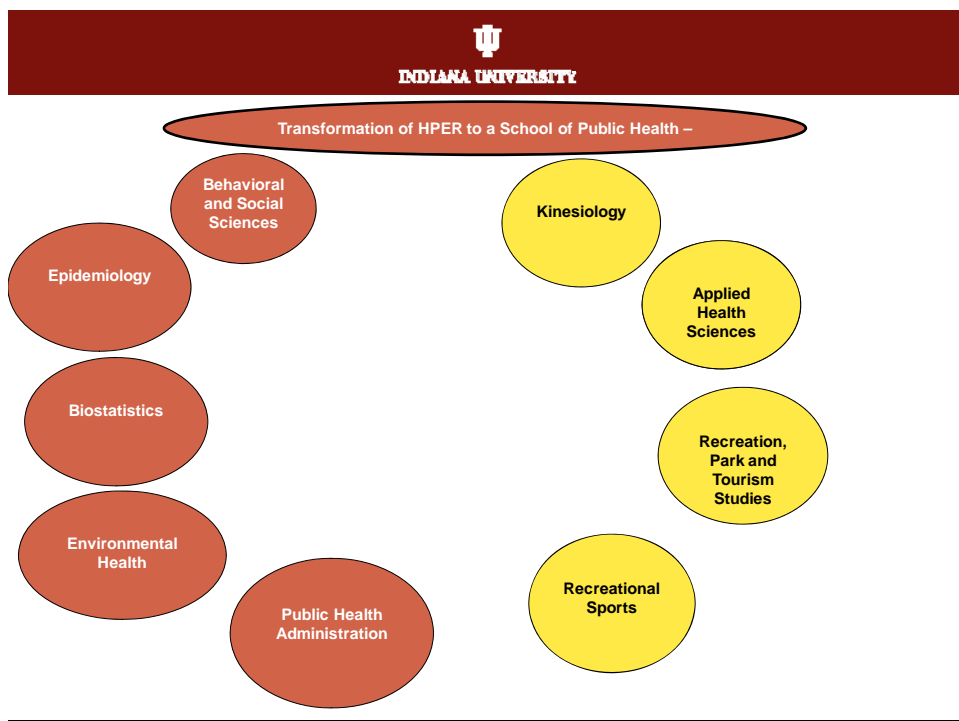
### Accreditation Standards

HPER proposal to Provost, President and Board of Trustees for name change ~winter, 2010

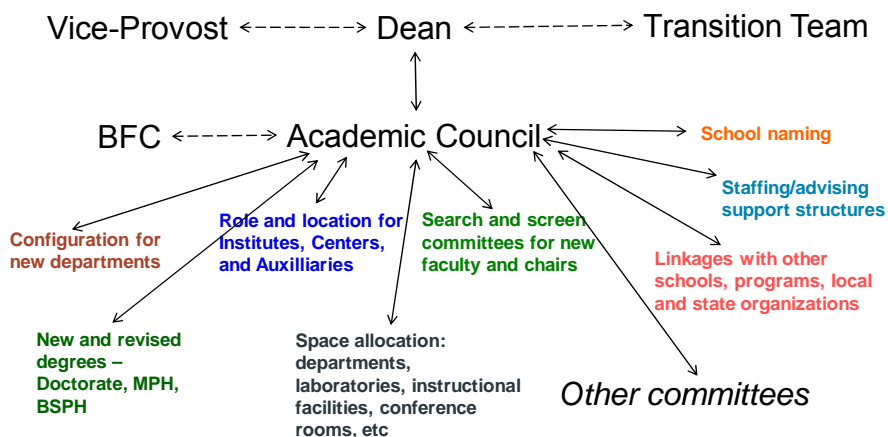
- At minimum, the SPH shall offer the **Master of Public Health (MPH) degree** in **each of the 5 areas** and a **doctoral degree** in **at least 3 of the 5 specified areas** of public health knowledge
  - Biostatistics
  - Epidemiology
  - Environmental health sciences
  - Health services administration
  - Social and behavioral sciences
- At least 5 faculty for each core MPH concentration area
- For core areas offering a doctoral degree, the 5 faculty must be all full time in the SPH
- For core areas not offering a doctoral degree, the school should have a minimum of 3 full-time faculty plus two full-time equivalent (FTE) faculty

### HPER's Approach to Transformation

- Current Capacity in HPER to meet the CEPH core area requirements
  - Behavioral and Social Sciences **39**
  - Biostatistics **3**
  - Environmental Health Sciences **6**
  - Epidemiology **5**
  - Health Administration **4**
  - **TOTAL 57**
  -
- **Active Public Health Faculty Searches – Tenure Track**



  
 INDIANA UNIVERSITY  
**APPROACH FOR DEVELOPING OUR VISION**



- Committees' structures
- Committees' processes
  - Dean's Associates
  - Consultants

Comments Questions