

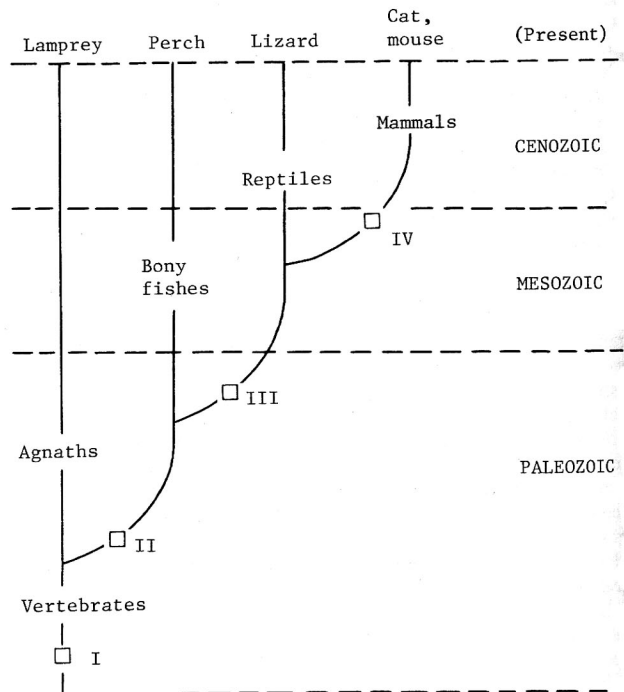
**Figure 33.4** Cladograms based on shared anatomical characteristics. (Modified from Joel Cracraft, p. 171, Figure 1, in L. R. Godfrey, ed., *Scientists Confront*

*Creationism*, W. W. Norton & Company, Inc., New York Copyright © 1983 by Laurie R. Godfrey. Used by permission.)

From Strahler, Arthur N., *Science and Earth History - The Evolution/Creation Controversy*. 1987, Prometheus Books, Buffalo, N.Y. page 328.

Anatomical features present:

Rank:	I	II	III	IV	
Highest	x x x	x x x	x	x x x	Mouse, cat
	x x x	x x x	x		Lizard
	x x x	x x x			Perch
Lowest	x x x				Lamprey



**Figure 33.5** Hierarchical structure derived from cladogram analysis of shared similarities shown in Figure 33.4. (A. N. Strahler.)

**Figure 33.6** Cladogram number four of Figure 33.4, adjusted to the fossil record of Phanerozoic time. (A. N. Strahler.)