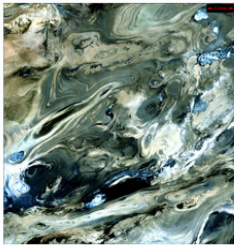
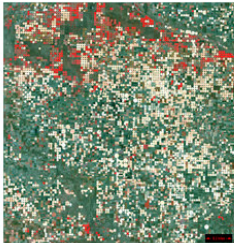
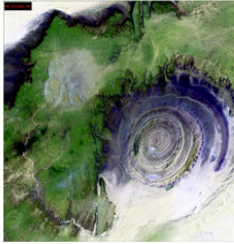
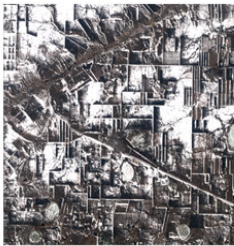
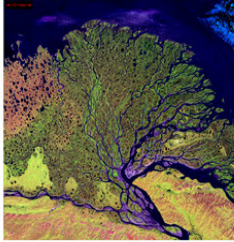


Earth as Art Contest



Enter the GIS Day *Earth as Art* Contest!

The Indiana University Geographic Information Systems (GIS) community is hosting the 2nd annual Earth as Art contest in celebration of GIS Day, November 19th, 2008. The idea for the Earth as Art contest is based on the Earth as Art Gallery sponsored by the US Geologic Survey and NASA. It features amazing images of earth with an artistic perspective.

Participants in this annual contest are encouraged to create works of art based on satellite imagery, aerial photography, elevation data, infrared imagery, or map features from locations around the world. The geographic data can be displayed in a variety of colors - allowing for a unique and personal perspective of land and man-made features.

This contest is open to the public. The winner will receive a \$50 VISA card from 39 Degrees North to be used wherever VISA is accepted.

Entry deadline:

Monday, November 17th

For contest details, see:

<http://www.indiana.edu/~gis/gisday>

GIS Day (November 19) is a global event for users of Geographic Information Systems (GIS) technology in an effort to educate people about how geography makes a difference in our lives and to demonstrate this technology to schools and organizations around the world.

Images from top to bottom:

Lena Delta, Russia. River delta wilderness area. 2000
Komsomolets, Northern Kazakhstan. Winter Landscape. 2002
Namib-Naukluft National Park, Namibia, Africa. Sand dunes. 2000
Maur Adrar Desert, Africa. Richat Structure. 2001
Garden City, Kansas. Center pivot irrigation systems. 2000
Dasht-e Kevir, Iran. Salt Marshes. 2000



INDIANA UNIVERSITY