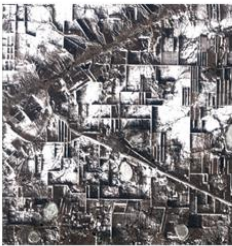


Earth as Art Contest



Enter the GIS Day MULTIMEDIA *Earth as Art* Contest!

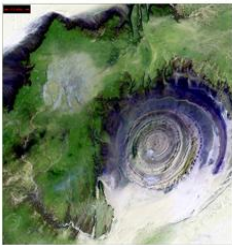
The Indiana University (IU) Geographic Information Systems (GIS) community is hosting the 3rd annual Earth as Art contest in celebration of GIS Day, November 18, 2009. This is the first year participants may have a multimedia entry. IU's previous Earth as Art contests were based on the Earth as Art Gallery sponsored by the US Geologic Survey and NASA. This gallery features amazing images of the Earth with an artistic perspective. This year's participants are not limited to framed images or posters. Entries may include any original, geographic based video, song, rap, sculpture or other multimedia artwork.



Participants are encouraged to create works of art based on geography such as satellite imagery, aerial photography, elevation data, infrared imagery, map features, GIS/remote sensing software and/or geographic terms and tools.



This contest is open to the general public of all ages. Have fun with this contest and surprise us at the GIS Day event! The winner will receive a \$50 VISA card from 39 Degrees North to be used wherever VISA is accepted.

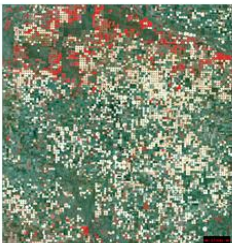


Entry deadline:

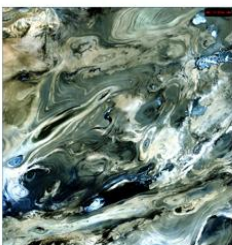
Monday, November 16, 2009

For contest details, see:

<http://gisday.indiana.edu/poster.html>



GIS Day (November 18, 2009) is a global event for users of Geographic Information Systems (GIS) technology in an effort to educate people about how geography makes a difference in our lives and to demonstrate this technology to schools and organizations around the world.



Images from top to bottom:

Lena Delta, Russia. River delta wilderness area. 2000
Komsomolets, Northern Kazakhstan. Winter Landscape. 2002
Namib-Naukluft National Park, Namibia, Africa. Sand dunes. 2000
Maur Adrar Desert, Africa. Richat Structure. 2001
Garden City, Kansas. Center pivot irrigation systems. 2000
Dasht-e Kevir, Iran. Salt Marshes. 2000



INDIANA UNIVERSITY