

## Indiana University Individualized Major Program

# imp independent

College of Arts & Sciences Alumni Association

Vol. 1, No. 2  
Summer 2006

## Curtain closes on IMP dance performance program

Dance performance has long been a staple of the Individualized Major Program. For the last four years, students in the major have been sponsored by Elizabeth Shea, Laura Poole, Gwendolyn Hamm, and Iris Rosa. Dance recitals have been among the highlights of IMP final project performances: The program's Outstanding Project Award for 2003-04 was shared among six dance students for their collaborative final project, *Revival: A Rebirth of Dance*.

However, now that the Department of Kinesiology is once again offering its bachelor of science in dance, dance performance will no longer be offered as an individualized major. One of the IMP's functions is to provide a home for majors as they develop and become established within other departments or schools.

According to Shea, the advantages of the BS include a more extensive and better-integrated dance curriculum, broader recognition in the job market, and a larger student cohort. Currently, 15 students are pursuing the degree; Shea hopes to increase this number to 40 or 50. Variations like world dance, for example, might still be done through IMP.



Tom Stio

IMP dance performance senior Amanda Tanguay is thrown in the air during *Coming to Light*, choreographed by Professor Elizabeth Shea, a dance performance sponsor.

"Huge thank yous to the IMP," Shea says. "The great advantage [of the IMP] for faculty is the opportunity to mentor a student in a way that you don't have in other

programs. That might be a disadvantage of having a dance major — that you don't get that one-on-one interaction that's helpful both to the student and to the faculty."

### Enigmatology at Sundance Festival

Patrick Creadon's film *Wordplay*, which premiered at this year's Sundance Festival, features IMP alumnus and *New York Times* puzzle editor Will Shortz, who, along with his collaborators, demonstrates the creation of a crossword puzzle. Shortz's major in enigmatology (the study of riddles and, in this case, puzzles) was among the earliest conferred by the IMP (he graduated in 1974). It included tutorials in 20th-Century American Word Puzzles, Logic Problems, and The Psychology of Puzzles.

### From the director's desk

## Program responds to change

As many of you know, the national trend in undergraduate interest is away from the liberal arts and toward the practical, the technological, the immediately applicable. This development raises interesting issues for the Individualized Major Program. We are, after all, a College of Arts and Sciences program; we grant bachelor of arts degrees. But we are also, very much by definition, the unit set up to respond to the changing intellectual and creative needs of students throughout the university. If those needs

induce increasing numbers of students to create majors with focuses that bear little obvious relationship to the arts and sciences, what should the IMP do? Should we welcome all potential IMP majors evenhandedly? Or should we encourage some and discourage others, with the stated or unstated purpose of channeling students toward areas intrinsic to the emphases of the College or at least close to them? Overall, what is the role of IMP in a changing university landscape?

(continued on page 2)

# Program news

## Student honors

Five Individualized Major Program students were inducted into Phi Beta Kappa in fall 2005: **Mzilikazi Koné**, human rights with focus in Latin America; **Nathan Bohnert**, human biology; **Lauren Feldman**, fashion design; **Raymond Fleischmann**, writing for sequential art; and **Michael Jefferson**, film and cinematography. In spring 2006, **Margot Gendreau**, musical theatre; **Lissa Putnam**, event management; and **Amanda Tanguay**, dance performance, were inducted in Phi Beta Kappa.

**Kathleen Claussen**, whose major is social policy and ideology, has been named one of 12 national recipients of the 2006–07 George J. Mitchell Scholarship. She will seek a graduate degree in international politics at Queen's University in Belfast, Northern Ireland.

**Jodie Isles** has been named the Ruth Halls Outstanding Young Artist. The creative writing/poetry major's poem "Between a Rock and a Hard Place" received honorable mention for the Undergraduate Keisler poetry prize.

Contemporary vocal arts major **Evan Merida** received the Dorothea Lee Williams Karsell College of Arts and Sciences Scholarship for 2006–07.

**Martin Sorge**, a dramatic literature and playwriting major, received the Albert Wertheim Memorial Award for 2006–07. The award, which alternates annually between a graduate and an undergraduate student, supports the research of students specializing in drama and theatre history.

## IMP speakers

The following speakers have appeared at Individualized Major Program events in the past few years:

- Stuart Mufson, of the Department of Astronomy, on the possibility of extraterrestrial intelligent life
- Leah Savion, of the Department of Philosophy, on logic and reasoning
- David Eastman, IMP alumnus, on how to use your IMP major
- Gerald Baldasty, of the University of Washington, on contemporary media
- Kevin Jaques, of the Department of Religious Studies, on contemporary Islam
- Ray Hedin, IMP director/Department of English, on family stories

## *Student profile*

### Tierney McGuire

While it's not often that a student enters IU as a freshman already admitted to IMP, it does happen.

**Tierney McGuire** is a case in point. The Bloomington High School North graduate had already spent two years working in the violin shop of IU's Jacobs School of Music when she proposed a major in violin making.

The proposal, which includes courses in chemistry and physics, as well as the craft and history of stringed-instrument construction, was enthusiastically approved by her faculty committee. McGuire developed her interest in the centuries-old art while watching her own violin being repaired.

After graduating, McGuire, whose other interests include reading and volunteering as a crew leader for Habitat for Humanity, plans to apply for a Fulbright grant and continue studying in England or France.



*Tierney McGuire works on a violin at her desk in the String Technology Department of the Jacobs School of Music.*

## From the director

*(continued from page 1)*

Having discussed these issues at length with assistant director Paul Aarstad as well as with the members of our IMP Faculty Advisory Committee, I want to take this opportunity to let our alumni and friends know where the program stands.

First of all, we feel that the IMP should continue to welcome enthusiastically a full range of proposals for IMP majors, without prior restriction or judgment on them. We will allow all qualified students to make their case for a particular major to the admission committee that we assign to each student. We (in this case, primarily Paul Aarstad) will do whatever we can to help the student construct as strong a case for that major as possible. This is an individualized program, and the student's freedom to shape a major of his or her own is central to the nature of the program. Each admission committee will then continue to decide on a case-by-case basis whether the proposed major makes intellectual and/or creative sense. We will continue to respond supportively, in short, to a changing landscape.

But we will also urge each admission committee, more emphatically than we have in the past, to broaden the range of courses and experiences that a student

proposes whenever that seems necessary to give the major sufficient cultural context and intellectual depth. The real danger is not practicality or professional orientation, but narrowness or superficiality.

At the same time, we will continue to require that students include at least 15 College credits inside their IMP majors. We will continue to support the College's stipulation — in the face of occasional student protest — that IMP students fulfill all College requirements: four semesters of a foreign language and four courses each from the arts and humanities, social and historical studies, and the natural and mathematical sciences. We will continue to insist on a significant written component in each student's final project.

What we hope for is a balance: our students will continue to have great leeway in shaping their programs, and we will continue to insist on a certain degree of structure and a solid base in the arts and sciences. Freedom without complete license; respect for student interest and initiative while maintaining the mentoring role of the faculty; the advantages of focus and the necessity a broad perspective: those have been and will continue to be the core principles of the IMP.

— Ray Hedin

## Featured major

### Forensic science

As the IMP bids farewell to some majors that have been fledged under its auspices and that are now ready to take flight, others emerge to take their place. Students whose interests include the sciences and criminal justice might consider a major in forensic science through the IMP.

Because the field of forensics incorporates techniques from a variety of academic disciplines, forensic science is a natural for an interdisciplinary program like the IMP. The fact that the IMP major provides the opportunity to pursue forensic science within the context of a bachelor of arts program is particularly significant because analytical skills are equally as important as technical knowledge in criminal investigations.

Students in the major have taken courses in a wide range of sciences — including biology, chemistry, medical sciences, and physical anthropology — along with courses on the criminal justice system, criminal investigations, and the courts. Students have also found that even seemingly unrelated fields like political science and philosophy have a great deal to offer.

The required final project gives these students the opportunity to apply what they've learned to real-world cases. **Abigail Anderson**, for example, won the program's Outstanding Senior Project award for 2004–05 for her analysis of a homicide investigation. **Jennifer Adams**'s senior project involves the study of all death cases conducted by the Monroe County Coroner's Office in 2004. Adams also works as an assistant coroner in Monroe County. According to Professor Kip Schlegel, Anderson and Adams's faculty sponsor, "There are a number of exciting job opportunities for students who enjoy the rigor of scientific inquiry and its application to the field of law." The forensic science major prepares students for potential careers as crime-scene technicians, laboratory technicians, and deputy coroners and is an appropriate pre-law major.

## **Emerging IMP majors reflect world issues**

Indiana University Bloomington students' environmental and social consciousness is increasingly reflected in their chosen majors. Current majors include

- a holistic approach to environmental and cultural awareness;
- building working class and minority communities;
- environmentally and socially sustainable entrepreneurship;
- sustainable urban development;
- documenting sustainable cultures: representations of American Indians through the media;
- sustainable human environmental interaction;
- social and environmental awareness and action;
- human rights with focus on Latin America; and
- social and environmental sustainability/organic farming.

Other emerging majors include music business, public relations, advertising, and forensic science (see sidebar at left).

In the visual arts, popular majors include sequential art, writing for sequential art, anime, and digital game design.

Some majors that the Individualized Major Program has handled over the years are in the process of becoming established in their own right; these include fashion design, musical theatre, and human biology.

## Student profile

### Sophomore studies society and health

**Abbey Stemler** is an anthropology of health and fitness major who entered the IMP as a second-semester freshman in spring 2005. Now a sophomore, she is pursuing a second major in psychology, as well as minors in anthropology and sociology and a certificate from the Liberal Arts and Management Program. Stemler is interested in the relationship between societal pressures and individual health outcomes, particularly in the area of mental illness. She intends to explore how the growing classifications of mental disorders are influenced by cultural values and the effects these classifications have on individuals.



*Abbey Stemler discusses her research during a poster session at the IMP Creative and Performing Arts Exhibition. Stemler is exploring mental health and cultural values.*

# Alumni notebook

## 1980s

**Christine Badowski**, BA'89 (video production/film studies), has worked in television production and new media. She has recently been named newspaper affiliate manager for Legacy.com and will act as the liaison between Legacy and more than 250 newspapers across the United States and Canada. She lives in Chicago.

**Natalia Browar Schau**, BA'89 (Native American textiles), is an academic adviser at IU's Health Professions and Prelaw Information Center. Her husband, Duane, BA'89, is vice president and chief information officer for the IU Alumni Association. Their son, Adam, BA'05, graduated from IU Bloomington in May with a degree in political science; a minor in leadership, ethics, and social action; and a certificate from

the Liberal Arts and Management Program. Their daughter, Kristina, is a senior in high school. Natalia's e-mail address is nschau49@yahoo.com.

## 1990s

**John Bubb**, '93 (musical theatre), has toured with a number of productions, including *South Pacific*, *The Civil War*, *Jesus Christ Superstar*, and *Phantom of the Opera*. He is currently pursuing a nursing degree and plans to attend graduate school in anesthesiology.

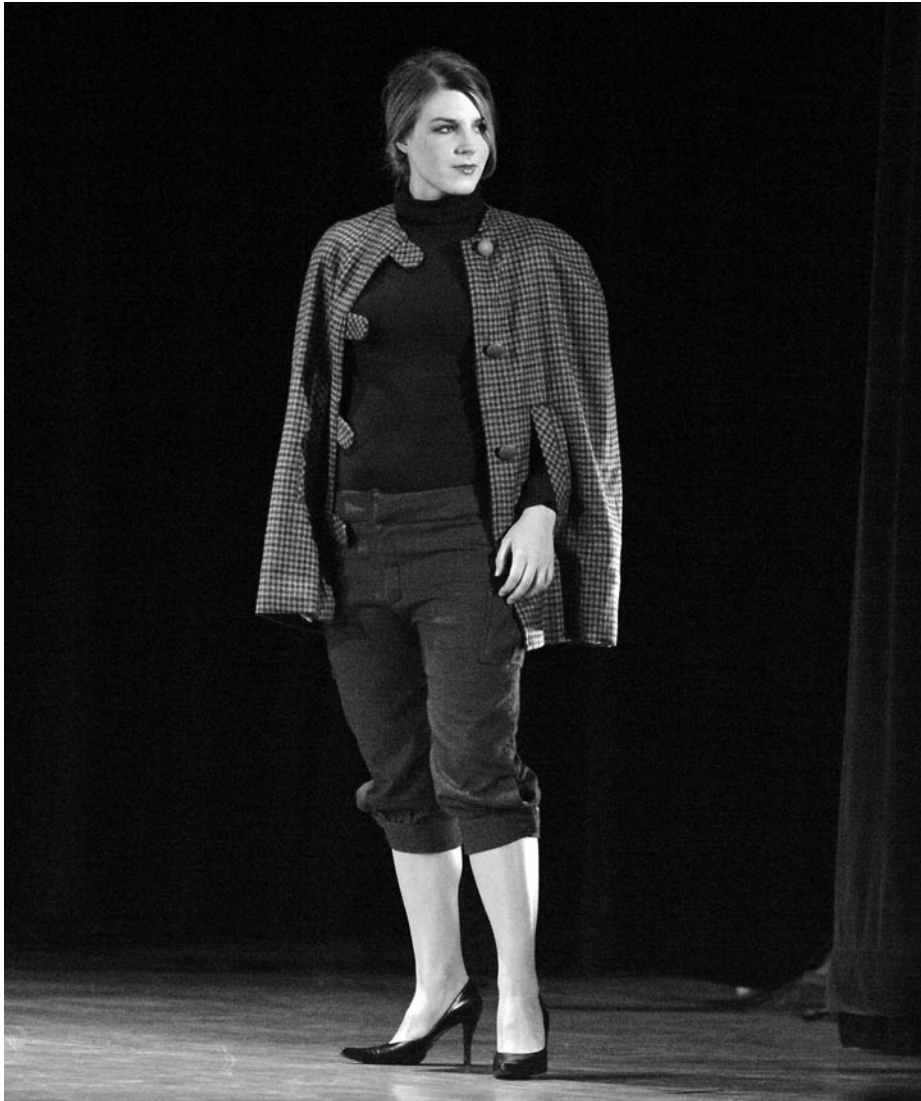
**Stacey Greene Locke**, BA'92 (musical theatre), worked for six years as a dancer, character actor and puppeteer for the Walt Disney Entertainment Department. She was a member of the opening cast of *The Hunchback of Notre Dame*, *A Musical Adventure* at

the Disney-MGM Studios. She retired from performing after the birth of her first child and spent the next six years as a facilitator for the Disney Institute Youth Education Programs, teaching programs in animation, movie making, careers, and the occasional special-request theater program. She is now a full-time homemaker in St. Louis.

**John Ladesic**, BA'91, works as a sales executive in entertainment, financial services, and information systems. His new company provides customized commercial and residential technologies to clients throughout the United States and the Virgin Islands.

**Lisa Brinson Trout**, BA'92 (late-Victorian/Edwardian design), moved to Boston after graduating, where she worked as an apprentice and design assistant to a Russian bridal designer. She and her husband then moved to Greece, where she worked as wardrobe manager for the National Opera in Athens and as a docent in the Jewish Museum of Greece. She now lives in Baltimore, where she teaches in a day school.

**Jenny Fumarolo**, BA'99 (film produc-  
*(continued on page 5)*



Tom Sito

IMP senior Katherine Collison models a creation from Kate BonDurant's line "Winter in Red Square" at the Creative and Performing Arts Exhibition on Feb. 20, 2005, in Willkie Auditorium.

## IMP Independent

This newsletter is published by the Indiana University Alumni Association, in cooperation with the Individualized Major Program and the College of Arts and Sciences Alumni Association, to encourage alumni interest in and support for Indiana University. For activities and membership information, call (800) 824-3044 or send e-mail to [iualumni@indiana.edu](mailto:iualumni@indiana.edu).

### Individualized Major Program

Director ..... Ray Hedin  
Assistant Director ..... Paul Aarstad  
Departmental

Secretary ..... Nancy Vázquez-Soto

### College of Arts & Sciences

Dean ..... Kumble R. Subbaswamy  
Executive Director of Development  
& Alumni Programs..... David Ellies

### IU Alumni Association

President/CEO ..... Ken Beckley  
Director of Alumni

Programs ..... Nicki Bland  
Editor for Constituent

Periodicals ..... Julie Dales  
Assistant Editor ..... Abby Tonsing

THE  
COLLEGE

## Alumni notebook

(continued from page 4)

tion), moved to Los Angeles in February 2001, where she is a member of the IATSE local 871 as an assistant production coordinator for big-studio and independent films, as well as occasional television projects. A sampling of her credits can be found at [www.imdb.com](http://www.imdb.com).

**Kristin Long**, BA'95 (drama therapy), completed a master's degree in drama therapy and currently works as a creative arts therapist and psychotherapist in private practice in New York City. She is also completing a post-graduate psychoanalytic program at the Institute for Expressive Analysis.

**Geoff Williams**, BA'92 (screenwriting), is a freelance journalist. He has written for a number of publications, including *LIFE*, *Ladies' Home Journal*, *Entertainment Weekly*, *Entrepreneur* magazine, and *Babytalk*. His third book is scheduled to be published by Rodale in May 2007. He lives in Los Angeles.

## 2000s

**Marc A. Passo**, BA'00 (biomedical ethics), graduated first in his class from the Norwalk Community College Paramedic Program, worked for a time as a paramedic in both Connecticut and Massachusetts, and is currently a medical student at Tufts University in Boston.

**Angelique N. Cabral**, BA'01 (musical theatre), is a professional actor in New York City. She has appeared in commercials for Toyota and Chase, as well as in the daytime dramas *Guiding Light* and *All My Children*. She is now training for the New York City Marathon and studying acting under Wynn Handman.

**Amanda Skinner**, BA'03 (spirituality and ecology), participated in the School for Designing a Society in Urbana, Ill., before moving to Maine to work with the Beehive Collective, an arts and popular education organization. She has traveled in the United States and Latin America, presenting the Beehive's freely shared graphics about globalization and biodiversity.

**Gwyn E. Zawisza**, BA'04 (arts administration), is scheduled to complete a master's degree in communication at Purdue University in May, where she is putting her individualized major degree in arts administration to work by serving as the graduate assistant for Purdue Musical Organizations. She handled public relations and promotions for the Purdue Varsity Glee Club's tour of the United Kingdom and accompanied the group to New York City in November for its performance with the New York Pops. Her e-mail address is [gzawisza@purdue.edu](mailto:gzawisza@purdue.edu).

## Meet the people behind the program

**Ray Hedin** has been director of the Individualized Major Program since 1997. He is professor of American literature and American studies with a particular interest in contemporary fiction and autobiography. Hedin is the author of *Married to the Church*, a biographical/autobiographical study of the men with whom he attended Catholic seminary for eight years.

**Paul Aarstad** became assistant director of the IMP in spring 2003. He had previously worked in the Academic Assistant Deans' Office of the College of Arts and Sciences, advising exploratory students and coordinating second degrees. He received an MA in English literature from IU in 1989.

**Nancy Y. Vázquez-Soto** joined the IMP staff in 1996 as a part-time depart-

ment secretary and started working full time a year later. She is a graduate student in Latin American and Caribbean studies, and her research areas are gender and violence toward humans and animals. She volunteers for the local animal shelter as an adoption counselor. On Feb. 10, Vázquez-Soto and her husband, Carlos Colón, welcomed their son, Carlos Gabriel Colón Vázquez, into the world. Carlos Gabriel is their first child.

**Hillary Lodge** began working in the IMP in January 2006 as a temporary replacement for Vázquez-Soto during her maternity leave. Lodge received a BA in journalism from IU in 2004 and is currently pursuing a career in media, specifically broadcast television. She hopes to one day work for E! Entertainment Network as an on-air correspondent.

## Announcing IUAlumniCareers.com



The IU Alumni Association's new online career services center, **IUAlumniCareers.com**, is officially open! This Web site provides online career and mentoring services for IU alumni. Register at **IUAlumniCareers.com** to search for jobs posted by employers, post your résumé for review by employers, or search for an alumni mentor for career advice.

IU alumni are invited to register as mentors to give career advice to their fellow alumni. As a mentor, you may choose how often and in what manner you wish to be contacted, and you may opt out of the mentor program at any time.

Employers are invited to register to post job openings at no charge.

Only IUAA members may search for jobs and mentors, so activate your membership today!

Contact the IUAA membership department at [iuaamemb@indiana.edu](mailto:iuaamemb@indiana.edu) or (800) 824-3044.



**ALUMNI ASSOCIATION**  
CONNECTING ALUMNI. SERVING IU.

# Have tag, will travel



Send us your business card — or just your business information — and we'll send it back to you laminated and attached to a strap, perfect for your traveling pleasure. (One tag per graduate, please.)

Your luggage tag will show that you are proud of your connection to the College of Arts & Sciences at IU and will improve our alumni database.

Mail your card or information to Luggage Tags, College of Arts & Sciences, Kirkwood Hall 208, 130 S. Woodlawn, Bloomington, IN 47405.

**INDIANA UNIVERSITY**  
**ALUMNI ASSOCIATION**

Virgil T. DeVault Alumni Center  
1000 East 17th Street  
Bloomington, Indiana 47408-1521

Nonprofit Org.  
Postage  
PAID  
Indiana University  
Alumni Association

 Printed on recycled paper in U.S.A.



## What's new with you?

The IU Alumni Association is charged with maintaining records for all IU alumni. Please print as much of the following information as you wish. Its purpose, in addition to providing us with your class note, is to keep IU's alumni records accurate and up to date. To verify and update your information online, visit our online alumni directory at [www.alumni.indiana.edu/directory](http://www.alumni.indiana.edu/directory).

Publication carrying this form: Individualized Major Program Alumni Newsletter Date \_\_\_\_\_

Name \_\_\_\_\_

Preferred Name \_\_\_\_\_

Last name while at IU \_\_\_\_\_ IU Degree(s)/Yr(s) \_\_\_\_\_

Soc. Sec. # or Student ID # \_\_\_\_\_

Home address \_\_\_\_\_ Phone \_\_\_\_\_

City \_\_\_\_\_ State \_\_\_\_\_ Zip \_\_\_\_\_

Business title \_\_\_\_\_ Company/Institution \_\_\_\_\_

Company address \_\_\_\_\_ Phone \_\_\_\_\_

City \_\_\_\_\_ State \_\_\_\_\_ Zip \_\_\_\_\_

\*E-mail \_\_\_\_\_ \*Home page URL \_\_\_\_\_

Mailing address preference:  Home  Business

Spouse name \_\_\_\_\_ Last name while at IU \_\_\_\_\_

IU Degree(s)/Yr(s) \_\_\_\_\_

Your news: \_\_\_\_\_

\_\_\_\_\_

\_\_\_\_\_

\_\_\_\_\_

\_\_\_\_\_

\_\_\_\_\_

**Please send me information about IU Alumni Association membership.**

*IUAA membership supports and includes membership in the College of Arts and Sciences Alumni Association and your local alumni chapter. You may join online at [www.alumni.indiana.edu](http://www.alumni.indiana.edu) or call (800) 824-3044.*

Please mail to the address above, or fax to (812) 855-8266.