

**Burnett/Masters Junior Scholarships, 2006-07**

---



---

**November 26, 2006**



**Neal Andrew Brassard**

**Neal Brassard**, a biology major, chose **Academics** as the focus of his Burnett/Masters application. In addition to his studies, Neal is an Associate Member of Alpha Epsilon Delta, a Pre Medical/Pre Dental Honors Society, and is the Director of Membership for the Honors Student Association this year. Cathrine E. Reck, Clinical Assistant Professor of Chemistry, writes that “Neal is among the most apt, motivated, driven and overall responsible students with whom I have interacted.”



**Lisa C. Braverman**

**Lisa Braverman**, an international studies and English major, chose **International Affairs** as the focus of her Burnett/Masters application. For her capstone project for her international studies major she is planning a survey to gauge the impact on students of study abroad programs, and she also plans a conference where she will share her results. She hopes eventually to “create an international nonprofit organization that makes study abroad possible for college-aged individuals who might otherwise not have the opportunity to go.” Lisa also serves as co-president of the International Studies Student Association, which raises awareness of international issues on the campus, distributes a weekly email highlighting international events, and partners with organizations like the Commission on Multicultural Understanding. Professor Daniel Knudsen, Professor of Geography and Director of International Studies, writes “Lisa may be the brightest undergraduate student that I have encountered in over 25 years of teaching.”



**Matthew Patrick Bregger**  
**(Matt)**

**Matthew Bregger**, a telecommunications and art history major, chose **Academics** as the focus of his Burnett/Masters application. He currently works as a lab monitor in Professor Ron Osgood's production lab and for WTIU as a production crew member. Additionally, Matt has developed his own client base of those outside the school who seek camera and post-production work. He was recently able to participate in an overseas study program in Florence Italy, where he studied Renaissance Florentine Art and the achievements of Leonardo da Vinci. He was able to combine both his interests by doing some video production on his trip, while at the same time continuing his study of the Italian language begun at IU.



**Michael Steven Deranek**

**Michael Deranek**, a political science major, chose **Leadership** as the focus of his Burnett/Masters application. He has been both an intern and a TA for Dina Spechler's Y109 class, where she says he demonstrated skills as "a natural leader and educator." In addition, Michael is a founding member of Y'ALL (Youth Advocating Leadership and Learning), a student group that has planned Hurricane Katrina relief trips. Recently he was one of six student leaders chosen to lead a group of sixty students to Ocean Springs Mississippi over Spring Break, and another group of one hundred students to Biloxi Mississippi. He helped lead fundraising efforts, was often the contact person for relief agencies, and led meetings of student volunteers.



**Matisse Danielle Giddings**

**Matisse Giddings**, a Slavic languages and literature major, and chose **Leadership** as the focus of her Burnett/Masters application. Matisse is a member of No Sweat!, the local chapter of United Students Against Sweatshops (U.S.A.S.), a national organization of students fighting for fair labor practices around the world. She was involved in the group's successful attempt to persuade President Herbert to sign the Designated Suppliers Proposal and to set up an Anti-Sweat Advisory committee to the President, led by Dean McKaig. She recently attended the national U.S.A.S. conference in San Francisco, and there met factory workers from Kenya, Mexico, and Thailand, and students from all over the country.



**Kyle Joseph Guinivan**

**Kyle Guinivan**, who majors in finance and accounting, chose **Professionalism** as the focus of his Burnett/Masters application. He plans to pursue a career in finance with the hope that he might save enough money in that profession to eventually open an Italian restaurant which employs people with disabilities. His team for the PricewaterhouseCoopers xACT case competition was one of five national finalist groups flown to New York to present their case in front of a panel of high ranking professionals. The group was so impressed with Kyle they invited him to interview for an internship which he was subsequently offered. He has also interned for the Chicago Board Options Exchange and Target Corporation.



**Nicole Marie Hein  
(Nikki)**

**Nicole (Nikki) Hein**, who chose **Academics** as the focus for her Burnett/Masters application, majors in studio art with a minor in art history, and also participates in the Liberal Arts Management Program (LAMP). As a member of the tennis team, she was awarded Academic-All Big Ten honors and Alpha Beta Student-Athlete honors. She has also been inducted into the Phi Eta Sigma and Alpha Lambda Delta national honor societies. This past summer she was invited to work for Eichenbaum & Associates, a marketing and advertising agency in downtown Milwaukee, and a number of her ideas are being used this year by company clients.



**Holly Lee Hirt**

**Holly Hirt**, a marketing major in the Kelley School of Business, chose **Professionalism** as the focus for her Burnett/Masters application. She has served as the Marketing and Recruitment Director for Women in Business, an organization sponsored by the Business School. She has also chaired the sponsorship committee for Spirit of Sports, a campus event to raise money for Special Olympics Indiana, where she led her team to generate \$10,000 in sponsorships. She has interned with National City Commercial Capitol of Cincinnati, Ohio, and spent last summer in Cuernavaca, Mexico, living with a host family, learning about Hispanic culture, and serving as a cultural ambassador from IU and the US.



**Jessica Whitney Huell**

**Jessica Whitney Huell**, a major in both ballet and psychology, chose **Creative Activities** as the focus of her Burnett/Masters application. While at IU, Jessica has performed the lead role in the *Nutcracker*, and danced in many other programs, including *Winds from the South*, *Final Point*, *Paquita*, and *Napoli*. In addition, she volunteers for the Nutcracker Tea and has performed excerpts from the Spring Ballet in the Musical Arts Center for elementary school children. She has been a teacher for the IU pre-college ballet program, and choreographed for their end-of-year performance. Virginia Cesbron, Associate Professor in the Jacobs School of Music, writes, “Whitney is one of the most talented students I have known.”



**Rebecca Marie McCright**

**Rebecca McCright**, a major in accounting, finance, and business economics, chose **Service** as the focus of her Burnett/Masters application. Rebecca has participated in the YMCA 10K race and Bowl for Kids' sake (the fundraiser for Big Brothers, Big Sisters), and has volunteered for Wonderlab and Middleway House. She has also taken an Alternative Spring Break trip to Minneapolis, Minnesota, to volunteer at a domestic violence shelter. As Director of Projects for the organization, Civic Leadership Development (CLD), she directly oversaw the implementation of several projects, including a food drive which collected 750 lbs of food, a Random Acts of Kindness project for Bell Trace Senior Center which generated 300 cards for civil servants within the community, and a carnival for the children of Big Brothers, Big Sisters.



**Thomas Michael Noll**

**Thomas Noll** is majoring in computer information systems, business process management and operations management in the Kelley School of Business, and chose **Service** as the focus of his Burnett/Masters application. Through his involvement with Civic Leadership Development, the community service organization of the Kelley School of Business, he has volunteered at Wonderlab and participated in Alternative Spring Break trips to New Orleans, Biloxi, Mississippi, and Winston-Salem, North Carolina, where he helped build houses for Habitat for Humanity. As the Community Service Chair for his fraternity, he led the membership to complete 200 hours of community service on one day, twice the number of hours completed the previous year.



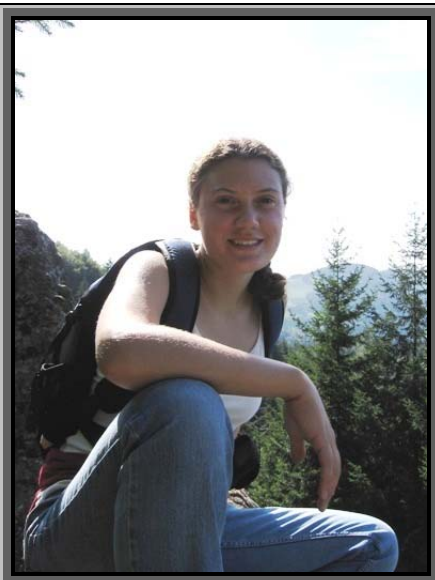
**Carime Corey Ritchie**  
**(Carrie)**

**Carime (Carrie) Ritchie** is majoring in journalism with a business foundations concentration, and chose **Leadership** as the focus of her Burnett/Masters application. While employed at the *Indiana Daily Student*, she has covered the Residential Programs and Services beat for the Campus Desk, and held city/state, managing, and campus editorships. She has also been the recipient of many journalism scholarships for her excellence in both academics and journalism. She is an editor and designer for the Council for Advancing Student Leadership (CASL) monthly newsletter, and also sits on the CASL board of directors.



**Samuel Charles Ross**  
**(Sam)**

**Samuel Ross** is majoring in political science and English, and chose **Academics** as the topic of his Burnett/Masters application. He recently won honorable mention in IU's intensive writing competition for a research paper written for his LAMP seminar, which explores gender roles in the crack cocaine market, and in which he asserts that "the inner city crack trade is eerily similar to the corporate structure of Wal-Mart or McDonalds." Wendy Gamber, Associate Professor of History, and the instructor of Sam's LAMP seminar, writes that Sam "is a marvelous student, the likes of whom I've rarely ever encountered in the course of my academic career." "Sam not only wrote an excellent paper," she continues, "he produced an uncommonly creative one. . . . His choice to explore economic and social experience outside the legitimate economy reflects both intellectual creativity and a willingness to take academic risks." Sam spent last summer in a Harvard study abroad program in Sweden, studying Vikings and medieval Icelandic literature.



**Abigail Mary Scott**

**Abigail Scott** is majoring in both Linguistics and German, and chose **Academics** as the focus of her Burnett/Masters application. Abigail's linguistics professor, Daniel Dinnsen, Chancellor's Professor of Linguistics, was so impressed with her work in her first linguistics class, that he invited her to begin graduate coursework in linguistics. He did not expect her to once again emerge as the top student, however, this time in a class of 27 graduate students. His realization that Abigail has "an extraordinary mind," led him to invite her to work in his lab on a highly sensitive project involving young children with speech disorders. Abigail is also a member of the National German Honor Society and has been on the Dean's List each semester.

No picture available

**BoonKiat Seow  
(Landry)**

**Boonkiat (Landry) Seow** is majoring in finance and accounting in the Kelley Business School, and chose **Service** as the focus of his Burnett/Masters application. Landry has been involved in the Civic Leadership Development program offered by the Kelley School of Business, where he participated in the Red Cross Blood Drive, Hurricane Relief packet distribution, and Teach for America. In addition, he helped the Monroe County Citizen Corps in preparing and distributing relief packets throughout the Bloomington area. Landry also sits on the Campus Judicial Board, has managed the website for the Spirit of Sport event, and is president of the Asian Business Society, which works to encourage international student interest in the Bloomington community.



**Gretchen Leigh Sneegas**

**Gretchen Sneegas** is majoring in German, anthropology and theatre, with a concentration in German theatre, and chose **Academics** as the focus of her Burnett/Masters application. Gretchen's goal is to become a dramaturge, and to prepare for this she takes classes in dramatic literature, history, theatre design, script and creative writing, and stage management. She is a member of several honors societies, including Phi Eta Sigma, the National Society for Collegiate Scholars and Delta Phi Alpha, and has volunteered at the Bloomington Playwright's Project and for the University Players. She attended an archaeology field school in Wyoming for two months this summer.



**Harini Srinivasan**

**Harini Srinivasan** is majoring in biology, with a focus on biochemistry and molecular and cell biology, and chose **Creative Activities** as the focus of her Burnett/Masters application. Harini has been involved in scientific research at Indiana University as a member of the Walker Lab in the Department of Psychology and Brain Sciences. The research in this lab focuses, she tells us “on identifying and understanding biochemical players and pathways that are involved in pain.” J. Michael Walker, the Linda and Jack Gill Chair of Neuroscience and Professor in the Psychological and Brain Sciences department, writes “Harini is a most unusual person. She ranks among the top-tier of students with whom I worked . . . .” Harini’s research is supported by both a Gill and Howard Hughes Medical Institute (HHMI) scholarship.



**Zachary Ethan Vonnegut-Gabovitch  
(Zach)**

**Zachary Vonnegut-Gabovitch** is majoring in political science, English, and economics, and chose **Academics** as the focus of his Burnett/Masters application. Judy Failer, Associate Professor in the Political Science department at IU, writes that Zach “brought a level of sophistication” to a moot court exercise in her constitutional law class that she rarely sees in freshmen. In a later course, Y305, he was one of her strongest students, “a leader in bringing together legal theory, constitutional law, and the particular legal case at hand.” Zach spent the summer after his freshman year enrolled at New York University, absorbing the “culture of ideas” he found there, and observing people, exploring museums and discovering the city.



**Jun Yin**

**Jun Yin** is majoring in biochemistry, and chose **Academics** as the focus of her Burnett/Masters application. She began work at the Herman B. Wells Institute for Pediatric Research at the IU Medical School during her freshman year, where she interned under Dr. Wei-hua Lee, whose lab studies insulin-like growth factors (IGF). In the fall of 2005, she joined Dr. Thomas Tolbert's biochemistry lab here at IU, where she is synthesizing ghrelin and other peptides that activate the growth hormone secretagogue receptor. Her research in Dr. Tolbert's lab has been supported by a Research Partnership Grant and an HHMI capstone grant. This past summer she worked in the Pathology Department at Eli Lilly, where she learned about cancer tissue histology and immunohistochemistry.