

# L541 Lab Session

Week 5

February 9/10, 2012

# Outline

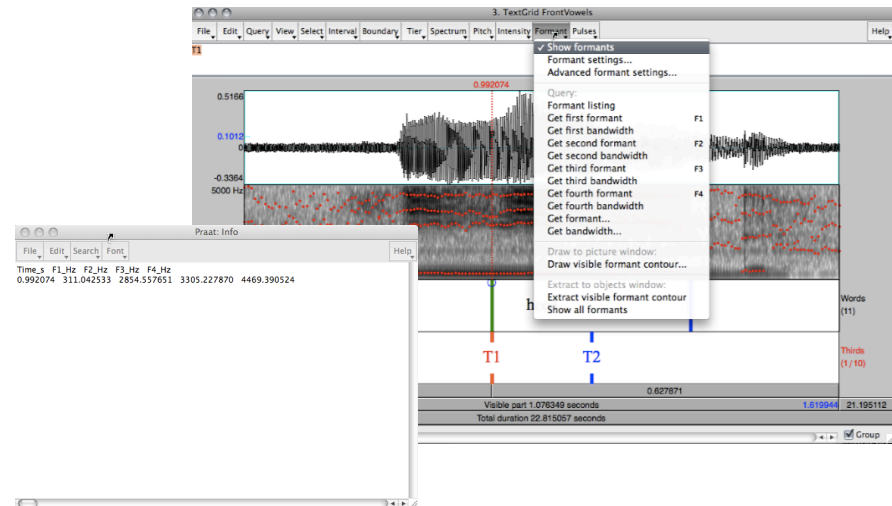
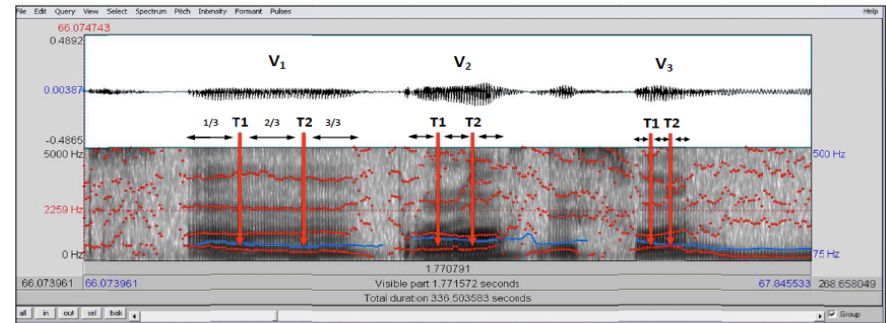
- Prospectus
- Vowel Measurements in Praat
- Plotting Vowels in Excel
- Homework

# Projects

- Final Sketch
  - **Decide on research question and sharpen it.** The group should work out a final decision as to which topic will be pursued, remove the topics that are not going to be pursued, sharpen up the description of the topic that will be pursued, answering any questions posed by the instructors about the topic, and again email the final **Sketch** to the group members and instructors *before* February 10 at 5pm.
- Research Prospectus
  - Draft Prospectus due Friday, Feb. 24
- Details on lab website
- Example Prospectus on lab website

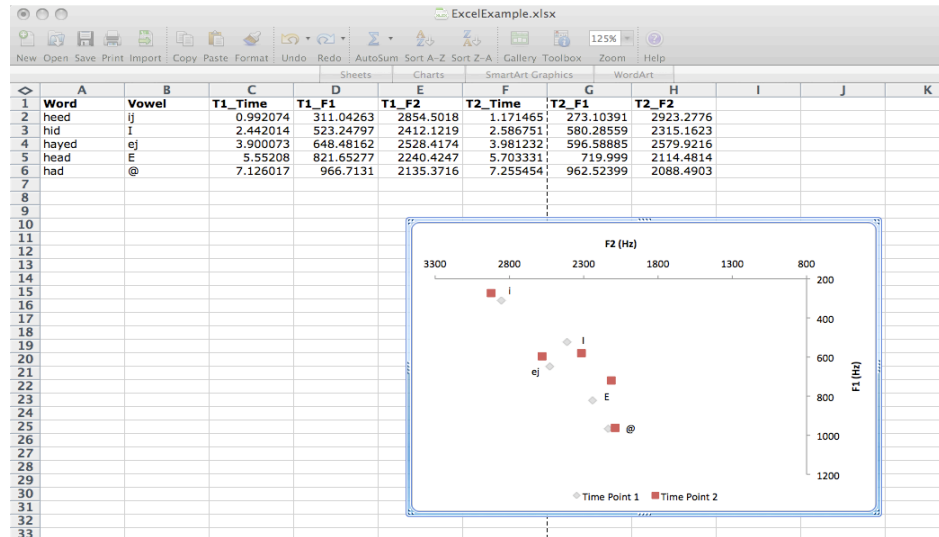
# Measuring Vowels in Praat

- Measure front vowels
  - ‘heed’, ‘hid’, ‘hayed’, ‘head’, ‘had’
  - 1/3 and 2/3 temporal points
- See “Formant Measurements in Praat” on Lab site



# Plotting Vowels in Excel

- See “Creating a Vowel Chart in Excel” on Lab site



# Homework