

# WISP Wire

## A Questioning Mind...

The real questions are the ones that obtrude upon your consciousness whether you like it or not, the ones that make your mind start vibrating like a jackhammer, the ones that you "come to terms with" only to discover that they are still there. The real questions refuse to be placated. They barge into your life at the times when it seems most important for them to stay away. They are the questions asked most frequently and answered most inadequately, the ones that reveal their true natures slowly, reluctantly, most often against your will.

Ingrid Bengis, Russian American Author



**Janice Bishop, Ph.D.**  
**Inaugural Speaker at first annual  
Outstanding Women Scientists lecture series**

**SETI researcher has an eye towards the surface of Mars...**

Janice Bishop has been watching the night sky ever since high school, when she first discovered her fascination with the stars and planets. While working on her master's degree at Stanford, she was a lab assistant at the NASA Ames Research Center. It was there that she began to focus her energies on Mars...and she's been seeing red ever since.

Bishop's work--a combination of planetary sciences, chemistry and geology--focuses on the minerals on the surface of the Red Planet. As one might imagine, it is difficult for scientists like Bishop to conduct work "in the field." She tackles the challenge by traveling to locations as diverse as the Hawaiian mountains, where it is very dry, to Iceland, where it is very cold, to locate field samples to compare to Martian rock.

Next year, Bishop will be getting a very close look at the surface of Mars. She is a co-investigator on the CRISM (Compact Reconnaissance Imaging Spectrometer for

Mars), which is making a trip to Mars in 2005 aboard a Mars Reconnaissance Orbiter. CRISM, a sort of high-tech detective, will be seeking clues that water once flowed on Mars by giving researchers a look at the mineral fingerprints that water may have left behind.

Bishop, a principal research investigator at the Search for Extraterrestrial Intelligence (SETI) Institute's Center for the Study of Life in the Universe, discussed the project and other developments in the study of this enigmatic planet during her lecture: "The Surface of Mars: What We Know and How We're Learning More" on Tuesday, Oct. 26, at 7:30 p.m. at Indiana University, Bloomington. A reception followed the lecture.

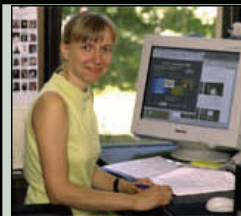
This event was sponsored by the Indiana University Office for Women's Affairs, Women in Science program. Over 180 people attended and many participated in a question and answer session at the end of Bishop's presentation. The follow-up reception provided a forum for one-on-one interaction between the audience members and Bishop.

## MEET TWO MEMBERS OF THE WISP ADVISORY COMMITTEE ...



**Catherine "Caty" Pilachowski, Ph.D.**  
**Astronomy Department  
Indiana University**  
Phone: (812) 855-6913  
Email: [catyp@astro.indiana.edu](mailto:catyp@astro.indiana.edu)  
<http://www.astro.indiana.edu/newastro/catyp.shtml>

Professor Pilachowski holds the Kirkwood Chair in Astronomy at Indiana University Bloomington. She served for more than 20 years on the scientific staff of the National Optical Astronomy Observatory (NOAO) in Tucson, Arizona. While at NOAO, she served as Project Scientist for the design and construction of the 3.5-meter [WIYN Telescope](#), a telescope in which the IUB Astronomy Department owns a 17% share. IU is fortunate to have this national figure in our campus.



**Katy Börner, Ph.D.**  
**Assistant Professor of Informa-  
tion  
Science, Adjunct Assistant Pro-  
fessor of Informatics, Core Fac-  
ulty in Cognitive Science**  
Phone: (812) 855-3256

Email: [katy@indiana.edu](mailto:katy@indiana.edu)

<http://www.slis.indiana.edu/faculty/>

Professor Börner is Founding Director of the new Cyberinfrastructure for Network Science Center at Indiana University. She is the recipient of many fellowships and awards, including Outstanding Junior Faculty Award, Pervasive Technology Laboratories Fellowship, SBC Fellow, NSF CAREER Award, and Trustees Teaching Award. Her research interests include information visualization and 3-D collaborative virtual environments. Professor Börner brings

## Office for Women's Affairs

### WISP Wire

Memorial Hall East  
Room 120  
Indiana University  
Bloomington

Phone: 855-3849  
Fax: 855-4869

Email: [owa@indiana.edu](mailto:owa@indiana.edu)  
[wisp@indiana.edu](mailto:wisp@indiana.edu)

Nonprofit Organization  
U.S. Postage  
**PAID**  
Bloomington, Indiana  
Permit No.2

## Research Day

On **Wednesday, March 2nd**, the Office for Women's Affairs is hosting its annual **WISP Research Day** at the IMU State Room East from 11:00am to 2:00pm. Undergraduate and graduate women from all sciences will once again have the opportunity to display their research to fellow WISP members and other students, staff, and faculty through poster presentations. Awards will be given to the two best *undergraduate* research posters, and also for the two best *graduate* research posters. For more information contact [wisp@indiana.edu](mailto:wisp@indiana.edu)

**UPCOMING EVENTS:** Watch for details on the next Outstanding Women Scientist lecture series guest. **Dr. Stephanie Forrest** will visit IUB on **January 13, 2005**. Dr. Forrest is professor of Computer Science at the University of New Mexico. Her research interests involve parallel adaptive systems, including genetic algorithms, classifier systems, computational immunology, and emergent computation. You can read more about her

### WISP Mission

The **Women in Science Program (WISP)** seeks to develop and implement programs that promote the participation of women in science, mathematics and technology at Indiana University.

WISP works to create a supportive and proactive learning and working environment in which women in science can thrive and succeed. Faculty in the Sciences serve as members of the WISP Advisory Committee.

### Websites of Interest

#### **The National Science Foundation:**

<http://www.nsf.gov>

#### **The American Association for the Advancement of Science:**

<http://www.aaas.org>

#### **The Association for Women in Science:**

<http://www.awis.org>

#### **Women and Minority in Science:**

[http://www.mills.edu/ACAD\\_INFO/MCS/SPERTUS/Gender/wom\\_and\\_min.html](http://www.mills.edu/ACAD_INFO/MCS/SPERTUS/Gender/wom_and_min.html)