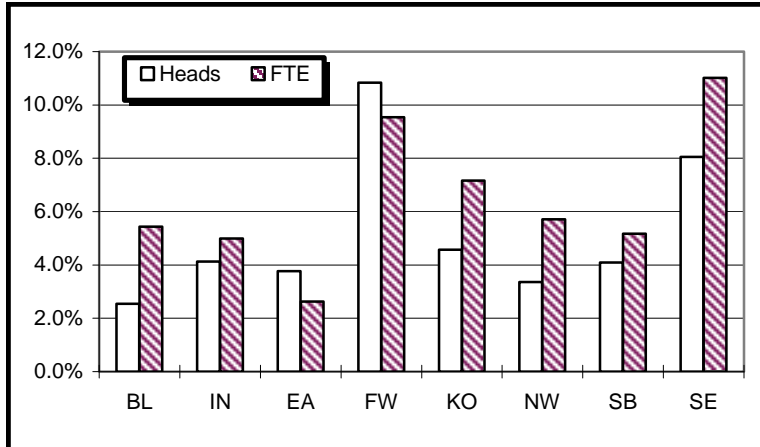
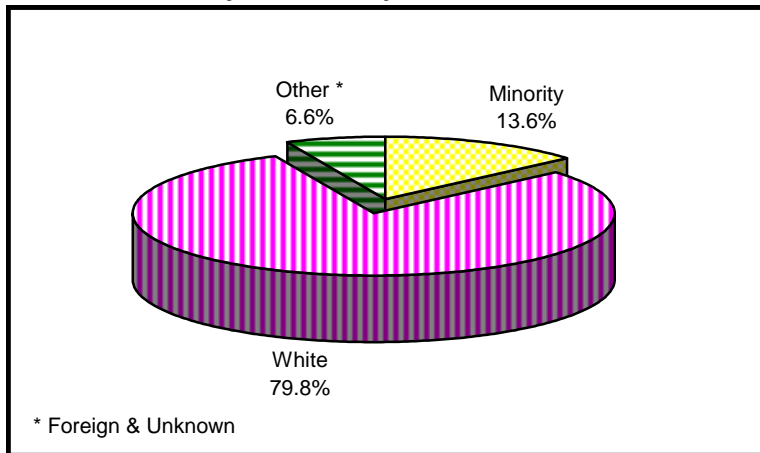




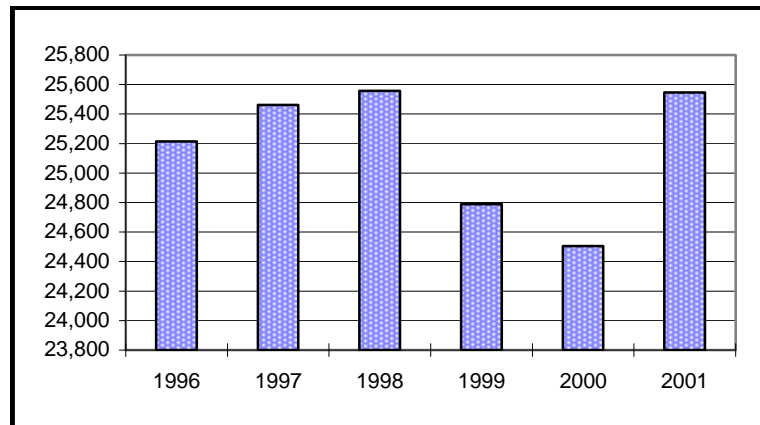
Enrollment Percent Change



Enrollment By Ethnicity



Historical Summer II Enrollment



University Enrollment Summary

	#	% Change(a)
Headcount	25,546	4.3%
Credit Hours	103,699.0	5.9%
FTE	7,339.5	5.9%
<b>Students By Class (b)</b>		
Freshman	2,386	6.8%
Sophomore	3,301	9.1%
Junior	3,100	0.0%
Senior	6,420	3.6%
<b>Students By Level</b>		
Undergraduate	15,207	4.5%
Graduate	4,718	6.2%
Professional	1,049	4.1%
Sp. Undergrad	2,272	5.9%
Sp. Graduate	2,300	-2.2%
<b>Sex</b>		
Male	10,124	5.9%
Female	15,422	3.2%
<b>Ethnicity</b>		
Amer. Indian	70	-10.3%
Asian	694	6.0%
Black	2,135	8.5%
Hispanic	567	7.4%
White	20,385	3.2%
Foreign	1,430	9.2%
Unknown	265	19.9%
<b>Undergraduates By FT/PT (b)</b>		
FT-UG	5,008	11.6%
PT-UG	10,199	1.3%
<b>Residency</b>		
Resident	21,172	3.6%
Non-Resident	4,374	7.7%

(a) Compared with Summer II, 2000

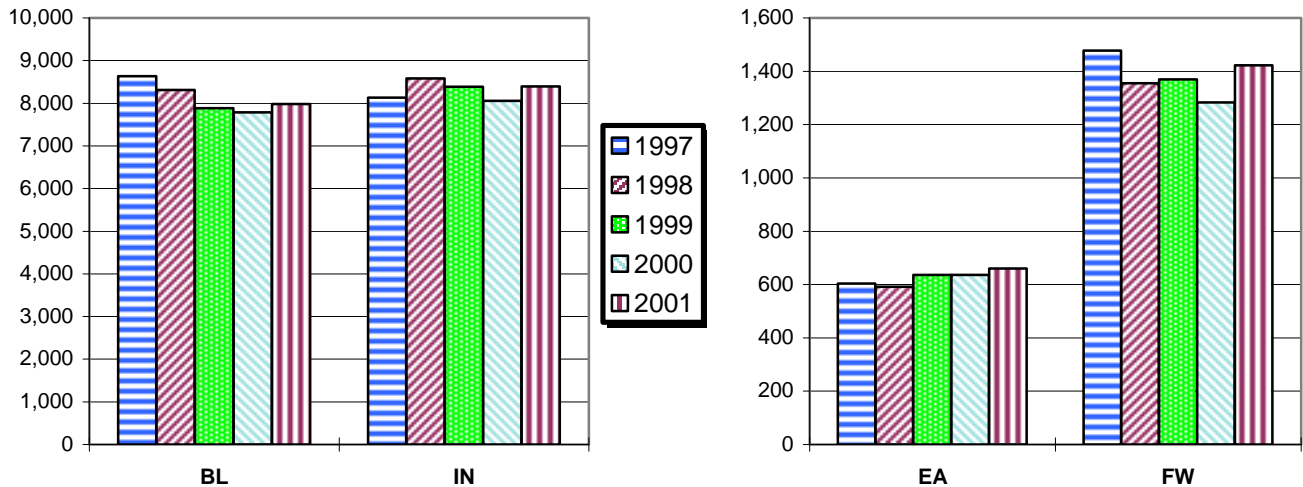
(b) Degree-seeking only

# Campus Enrollment Summary

## By Headcount, Credit Hours, and FTE

	Headcount		Credit Hours		FTE	
	#	% Change	#	% Change	#	% Change
<b>BL</b>	7,984	2.5%	35,626.5	5.8%	2,533.8	5.4%
<b>IN</b>	8,391	4.1%	32,691.5	4.5%	2,307.3	5.0%
<b>EA</b>	660	3.8%	2,554.0	3.1%	171.6	2.6%
<b>FW</b>	1,422	10.8%	5,207.0	10.2%	369.9	9.5%
<b>KO</b>	755	4.6%	2,890.0	8.6%	199.3	7.2%
<b>NW</b>	1,689	3.4%	6,682.0	4.9%	473.0	5.7%
<b>SB</b>	2,445	4.1%	9,366.0	5.4%	671.9	5.2%
<b>SE</b>	2,200	8.1%	8,682.0	11.1%	612.7	11.0%

## Historical Second Summer Session Enrollment



## By Undergraduate Enrollment Status

	Full-Time UG		Part-Time UG	
	#	% Change	#	% Change
<b>BL</b>	2,330	14.7%	2,075	-7.6%
<b>IN</b>	1,128	-1.2%	3,515	1.2%
<b>EA</b>	151	8.6%	439	12.0%
<b>FW</b>	205	17.1%	786	13.7%
<b>KO</b>	133	49.4%	441	6.0%
<b>NW</b>	316	3.3%	752	-3.6%
<b>SB</b>	358	22.2%	1,091	2.2%
<b>SE</b>	387	24.4%	1,100	9.6%

## By Residency

	Resident		Non-Resident	
	#	% Change	#	% Change
<b>BL</b>	4,915	3.1%	3,069	1.6%
<b>IN</b>	7,850	2.4%	541	37.7%
<b>EA</b>	643	3.9%	17	0.0%
<b>FW</b>	1,339	11.9%	83	-3.5%
<b>KO</b>	751	5.0%	4	-42.9%
<b>NW</b>	1,670	3.9%	19	-26.9%
<b>SB</b>	2,302	3.7%	143	10.9%
<b>SE</b>	1,702	2.9%	498	30.4%

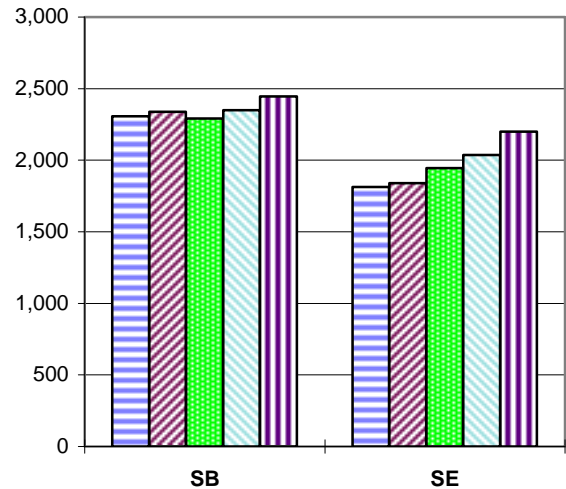
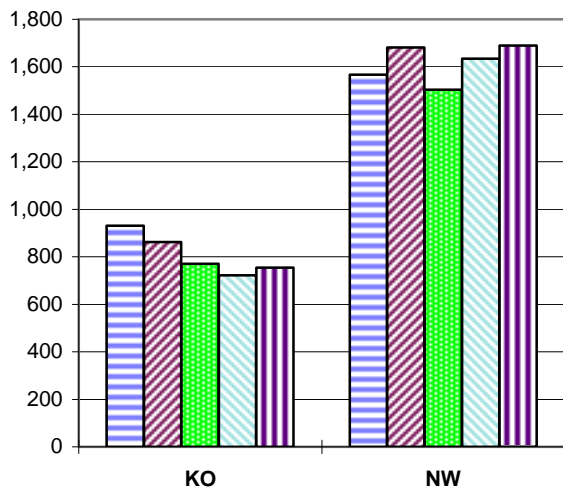
FW - IU Students Only

# Campus Enrollment Summary

## By Undergraduate Class Standing

	Freshman		Sophomore		Junior		Senior	
	#	% Change	#	% Change	#	% Change	#	% Change
<b>BL</b>	650	2.4%	461	12.7%	1,030	-1.6%	2,264	3.6%
<b>IN</b>	612	1.5%	1,209	4.9%	890	-8.6%	1,932	2.4%
<b>EA</b>	186	19.2%	176	26.6%	78	-8.2%	150	-0.7%
<b>FW</b>	162	20.9%	243	22.1%	196	14.6%	390	7.7%
<b>KO</b>	125	27.6%	184	25.2%	98	-10.1%	167	10.6%
<b>NW</b>	191	11.7%	313	-6.6%	204	10.3%	360	-8.9%
<b>SB</b>	275	21.7%	361	4.9%	282	13.7%	531	-2.0%
<b>SE</b>	185	-12.7%	354	18.0%	322	15.0%	626	19.7%

## Historical Second Summer Session Enrollment



## Graduate and Professional Enrollment

	Graduate		Professional	
	#	% Change	#	% Change
<b>BL</b>	1,931	5.8%	372	8.1%
<b>IN</b>	1,231	16.2%	677	2.0%
<b>EA</b>	1	n/a		
<b>FW</b>	273	-3.9%		
<b>KO</b>	51	-31.1%		
<b>NW</b>	216	-9.6%		
<b>SB</b>	586	4.6%		
<b>SE</b>	429	6.7%		

FW - IU Students Only

## By Sex

	Male		Female	
	#	% Change	#	% Change
<b>BL</b>	3,810	5.2%	4,174	0.2%
<b>IN</b>	3,393	7.4%	4,998	2.0%
<b>EA</b>	171	0.0%	489	5.2%
<b>FW</b>	469	11.4%	953	10.6%
<b>KO</b>	209	4.0%	546	4.8%
<b>NW</b>	501	-1.8%	1,188	5.7%
<b>SB</b>	790	3.0%	1,655	4.6%
<b>SE</b>	781	10.0%	1,419	7.0%

