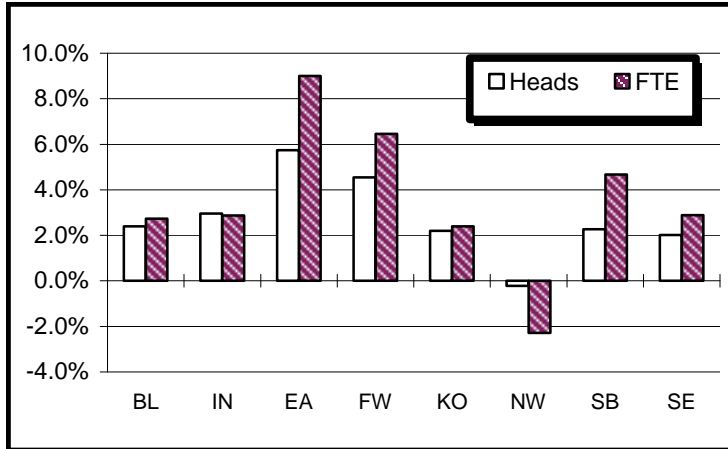
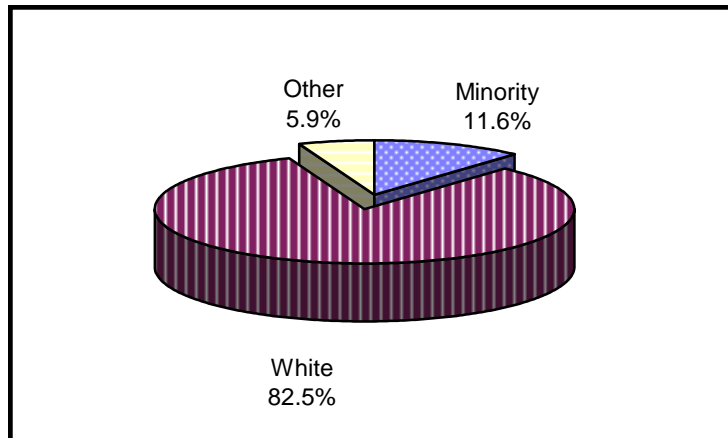




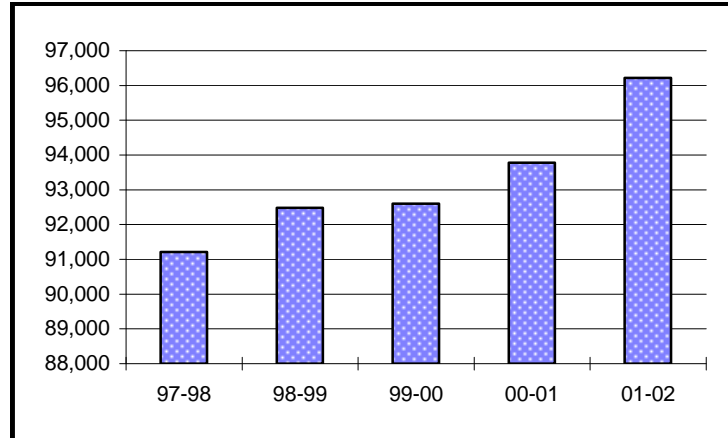
Enrollment Percent Change



Enrollment By Ethnicity



Historical First Semester Enrollment



University Enrollment Summary

	#	% Change(a)
Headcount	96,219	2.6%
Credit Hours	1,060,729.5	3.0%
FTE	72,565.1	3.0%
<b>Students By Class (b)</b>		
Freshman	23,768	1.0%
Sophomore	19,088	4.4%
Junior	12,987	1.9%
Senior	17,540	4.8%
<b>Students By Level</b>		
Undergraduate	73,383	2.9%
Graduate	12,286	4.3%
Professional	3,254	-0.9%
Sp. Undergrad.	3,536	-6.9%
Sp. Graduate	3,760	3.8%
<b>Sex</b>		
Male	40,388	2.5%
Female	55,831	2.7%
<b>Ethnicity</b>		
Amer. Indian	259	1.2%
Asian-Amer.	2,265	1.6%
African-Amer.	6,553	3.9%
Hispanic	2,073	5.1%
White	79,364	1.8%
Foreign	4,349	9.2%
Unknown	1,356	30.9%
<b>Undergraduates By FT/PT</b>		
FT-UG	53,288	3.4%
PT-UG	20,095	1.7%
<b>Residency</b>		
Resident	77,593	1.6%
Non-Resident	18,626	7.0%

(a) Compared with First Semester, 2000-01

(b) Degree-seeking only

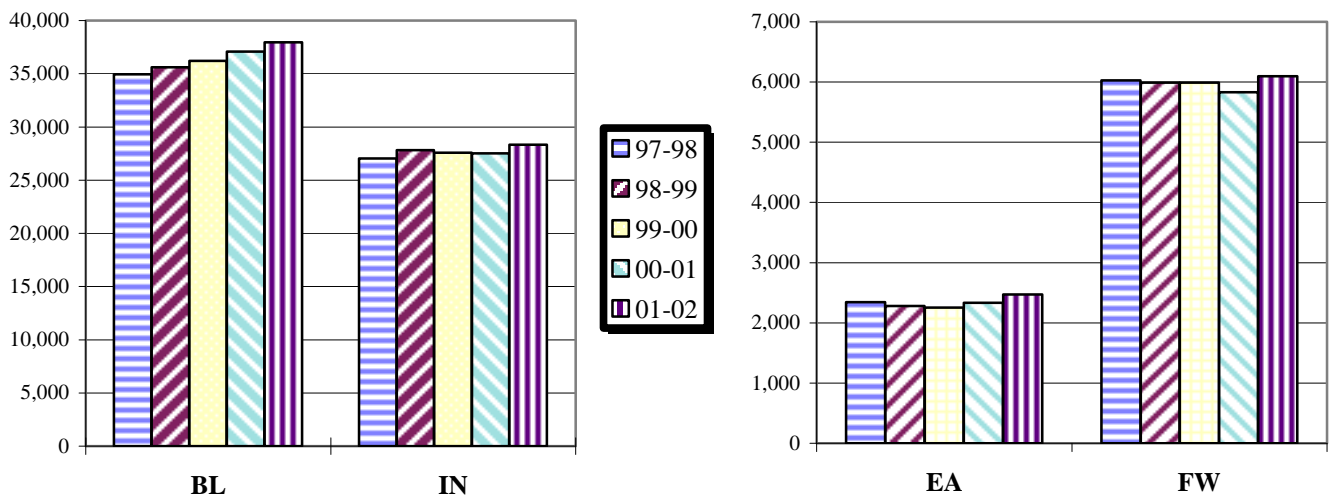
# Campus Enrollment Summary

## By Headcount, Credit Hours, and FTE

	Headcount		Credit Hours		FTE	
	#	% Change	#	% Change	#	% Change
<b>BL</b>	37,963	2.4%	503,460.5	2.7%	34,575.7	2.7%
<b>IN<sup>1</sup></b>	28,339	3.0%	284,406.0	2.8%	19,485.3	2.9%
<b>EA</b>	2,469	5.7%	22,378.0	9.0%	1,495.5	9.0%
<b>FW</b>	6,094	4.5%	59,115.0	6.3%	3,999.1	6.5%
<b>KO</b>	2,741	2.2%	24,600.0	2.8%	1,660.5	2.4%
<b>NW</b>	4,639	-0.2%	41,764.0	-2.5%	2,838.6	-2.3%
<b>SB</b>	7,417	2.3%	65,894.0	4.7%	4,507.6	4.7%
<b>SE</b>	6,557	2.0%	59,112.0	2.7%	4,002.9	2.9%

<sup>1</sup>Indianapolis headcounts are unduplicated as of First Semester, 2001-02.

## Historical First Semester Enrollment



## By Undergraduate Enrollment Status

	Full-Time UG		Part-Time UG	
	#	% Change	#	% Change
<b>BL</b>	27,744	3.1%	1,381	0.6%
<b>IN</b>	11,903	2.5%	8,397	2.1%
<b>EA</b>	1,116	12.7%	1,049	3.3%
<b>FW</b>	3,204	5.8%	2,057	-1.2%
<b>KO</b>	1,167	6.3%	1,108	0.2%
<b>NW</b>	2,027	-6.1%	1,458	-1.6%
<b>SB</b>	3,127	10.5%	2,478	7.5%
<b>SE</b>	3,000	3.3%	2,167	0.2%

## By Residency

	Resident		Non-Resident	
	#	% Change	#	% Change
<b>BL</b>	23,434	1.0%	14,529	4.7%
<b>IN</b>	26,491	2.0%	1,848	18.6%
<b>EA</b>	2,320	3.1%	149	77.4%
<b>FW</b>	5,779	5.3%	315	-8.2%
<b>KO</b>	2,718	2.2%	23	4.5%
<b>NW</b>	4,582	-0.5%	57	26.7%
<b>SB</b>	6,976	2.0%	441	7.6%
<b>SE</b>	5,293	-1.3%	1,264	18.9%

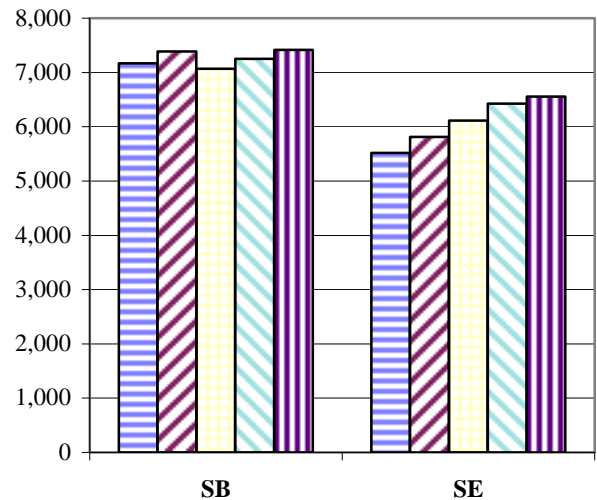
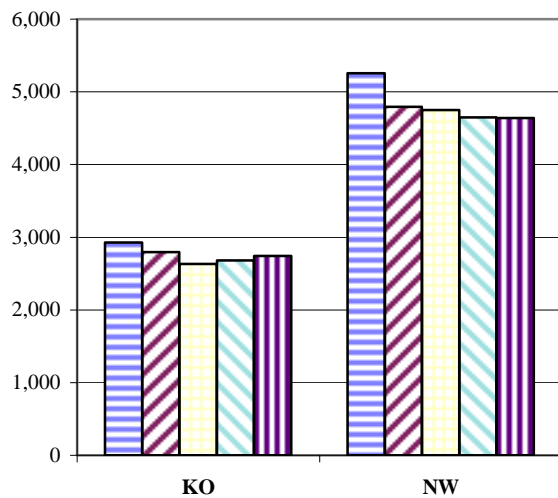
FW - IU Students Only

# Campus Enrollment Summary

## By Undergraduate Class Standing

	Freshman		Sophomore		Junior		Senior	
	#	% Change	#	% Change	#	% Change	#	% Change
<b>BL</b>	7,802	-2.4%	7,453	8.9%	6,171	-2.9%	7,699	8.5%
<b>IN</b>	6,486	-3.7%	5,641	4.2%	3,216	7.1%	4,957	5.6%
<b>EA</b>	997	9.8%	587	14.2%	203	-11.4%	378	6.8%
<b>FW</b>	2,438	22.0%	1,013	-20.7%	777	9.9%	1,033	-8.3%
<b>KO</b>	978	4.3%	631	4.1%	288	5.1%	378	-2.1%
<b>NW</b>	1,268	-2.5%	1,060	-6.4%	468	8.3%	689	-10.9%
<b>SB</b>	2,034	12.8%	1,412	8.5%	924	11.6%	1,235	2.7%
<b>SE</b>	1,765	-4.5%	1,291	8.1%	940	3.1%	1,171	5.5%

## Historical First Semester Enrollment



## Graduate and Professional Enrollment

	Graduate		Professional	
	#	% Change	#	% Change
<b>BL</b>	6,446	2.7%	898	-1.4%
<b>IN</b>	3,071	8.6%	2,356	-0.8%
<b>EA</b>	1	n/a		
<b>FW</b>	572	6.9%		
<b>KO</b>	130	-8.5%		
<b>NW</b>	391	5.1%		
<b>SB</b>	955	-1.7%		
<b>SE</b>	720	11.1%		

## By Sex

	Male		Female	
	#	% Change	#	% Change
<b>BL</b>	18,026	3.1%	19,937	1.8%
<b>IN</b>	12,010	2.5%	16,329	3.3%
<b>EA</b>	724	1.0%	1,745	7.8%
<b>FW</b>	2,253	2.5%	3,841	5.8%
<b>KO</b>	851	-1.8%	1,890	4.1%
<b>NW</b>	1,397	-1.0%	3,242	0.1%
<b>SB</b>	2,689	3.9%	4,728	1.4%
<b>SE</b>	2,438	0.7%	4,119	2.8%

FW - IU Students Only

