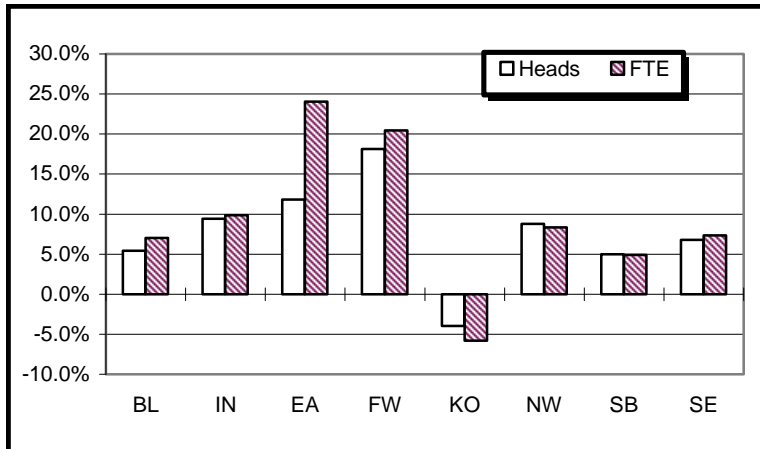
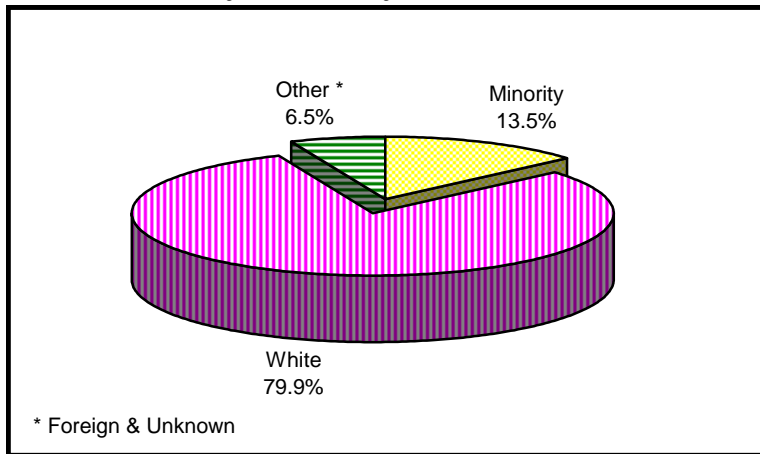




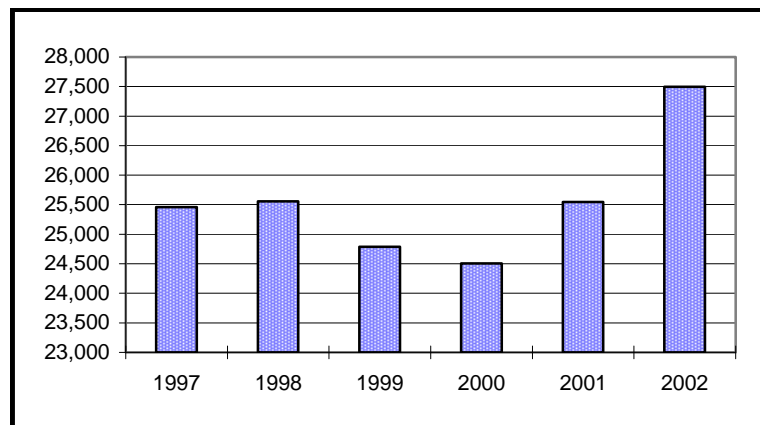
Enrollment Percent Change



Enrollment By Ethnicity



Historical Summer II Enrollment



University Enrollment Summary

	#	% Change(a)
Headcount	27,495	7.6%
Credit Hours	112,384.0	8.4%
FTE	7,967.9	8.6%
Students By Class (b)		
Freshman	2,664	11.7%
Sophomore	3,652	10.6%
Junior	3,608	16.4%
Senior	6,759	5.3%
Students By Level		
Undergraduate	16,683	9.7%
Graduate	5,074	7.5%
Professional	1,007	-4.0%
Sp. Undergrad	2,128	-6.3%
Sp. Graduate	2,603	13.2%
Sex		
Male	10,775	6.4%
Female	16,720	8.4%
Ethnicity		
Amer. Indian	64	-8.6%
Asian	748	7.8%
Black	2,284	7.0%
Hispanic	626	10.4%
White	21,982	7.8%
Foreign	1,422	-0.6%
Unknown	369	39.2%
Undergraduates By FT/PT (b)		
FT-UG	5,492	9.7%
PT-UG	11,191	9.7%
Residency		
Resident	22,685	7.1%
Non-Resident	4,810	10.0%

(a) Compared with Summer II, 2001

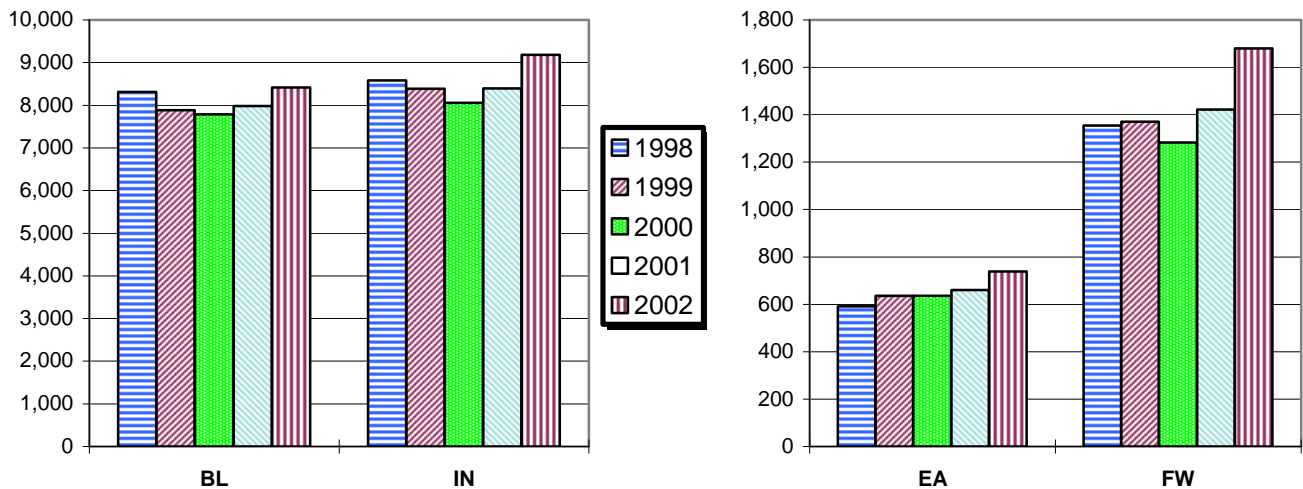
(b) Degree-seeking only

Campus Enrollment Summary

By Headcount, Credit Hours, and FTE

	Headcount		Credit Hours		FTE	
	#	% Change	#	% Change	#	% Change
BL	8,418	5.4%	38,124.0	7.0%	2,712.2	7.0%
IN	9,181	9.4%	35,687.0	9.2%	2,534.5	9.8%
EA	738	11.8%	3,172.0	24.2%	212.9	24.1%
FW	1,680	18.1%	6,289.0	20.8%	445.5	20.4%
KO	725	-4.0%	2,735.0	-5.4%	187.8	-5.8%
NW	1,837	8.8%	7,274.0	8.9%	512.6	8.4%
SB	2,567	5.0%	9,783.0	4.5%	705.0	4.9%
SE	2,349	6.8%	9,320.0	7.3%	657.6	7.3%

Historical Second Summer Session Enrollment



By Undergraduate Enrollment Status

	Full-Time UG		Part-Time UG	
	#	% Change	#	% Change
BL	2,517	8.0%	2,454	18.3%
IN	1,279	13.4%	3,754	6.8%
EA	225	49.0%	433	-1.4%
FW	240	17.1%	961	22.3%
KO	115	-13.5%	447	1.4%
NW	342	8.2%	824	9.6%
SB	368	2.8%	1,146	5.0%
SE	406	4.9%	1,172	6.5%

By Residency

	Resident		Non-Resident	
	#	% Change	#	% Change
BL	5,252	6.9%	3,166	3.2%
IN	8,369	6.6%	812	50.1%
EA	680	5.8%	58	241.2%
FW	1,598	19.3%	82	-1.2%
KO	720	-4.1%	5	25.0%
NW	1,820	9.0%	17	-10.5%
SB	2,435	5.8%	132	-7.7%
SE	1,811	6.4%	538	8.0%

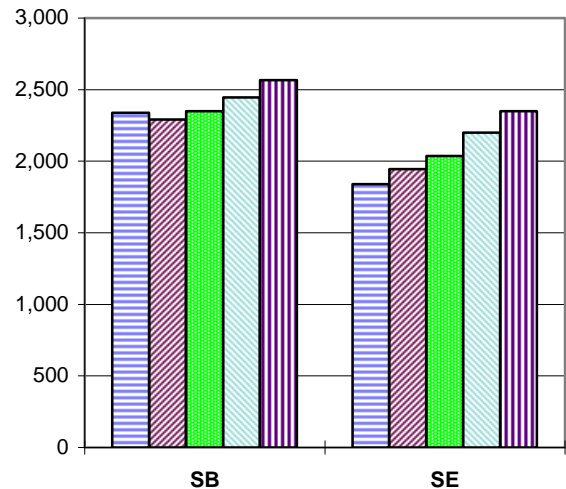
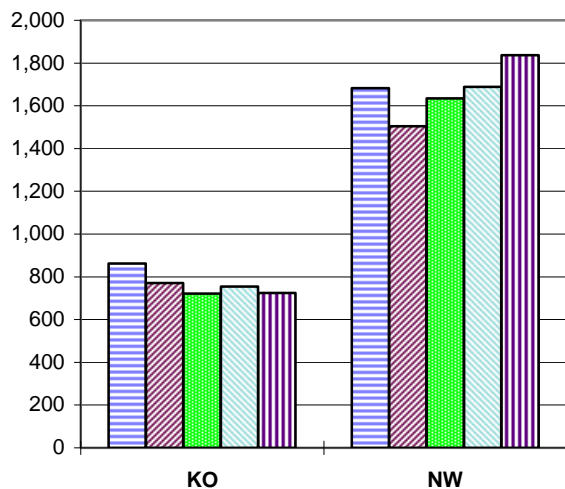
FW - IU Students Only

Campus Enrollment Summary

By Undergraduate Class Standing

	Freshman		Sophomore		Junior		Senior	
	#	% Change	#	% Change	#	% Change	#	% Change
BL	799	22.9%	514	11.5%	1,235	19.9%	2,423	7.0%
IN	617	0.8%	1,330	10.0%	1,043	17.2%	2,043	5.7%
EA	214	15.1%	178	1.1%	99	26.9%	167	11.3%
FW	193	19.1%	319	31.3%	258	31.6%	431	10.5%
KO	108	-13.6%	192	4.3%	103	5.1%	159	-4.8%
NW	246	28.8%	346	10.5%	175	-14.2%	399	10.8%
SB	277	0.7%	425	17.7%	292	3.5%	520	-2.1%
SE	210	13.5%	348	-1.7%	403	25.2%	617	-1.4%

Historical Second Summer Session Enrollment



Graduate and Professional Enrollment

	Graduate		Professional	
	#	% Change	#	% Change
BL	1,852	-4.1%	353	-5.1%
IN	1,606	30.5%	654	-3.4%
EA	2	100.0%		
FW	298	9.2%		
KO	41	-19.6%		
NW	224	3.7%		
SB	615	4.9%		
SE	436	1.6%		

FW - IU Students Only

By Sex

	Male		Female	
	#	% Change	#	% Change
BL	4,051	6.3%	4,367	4.6%
IN	3,665	8.0%	5,516	10.4%
EA	180	5.3%	558	14.1%
FW	555	18.3%	1,125	18.0%
KO	193	-7.7%	532	-2.6%
NW	535	6.8%	1,302	9.6%
SB	825	4.4%	1,742	5.3%
SE	771	-1.3%	1,578	11.2%

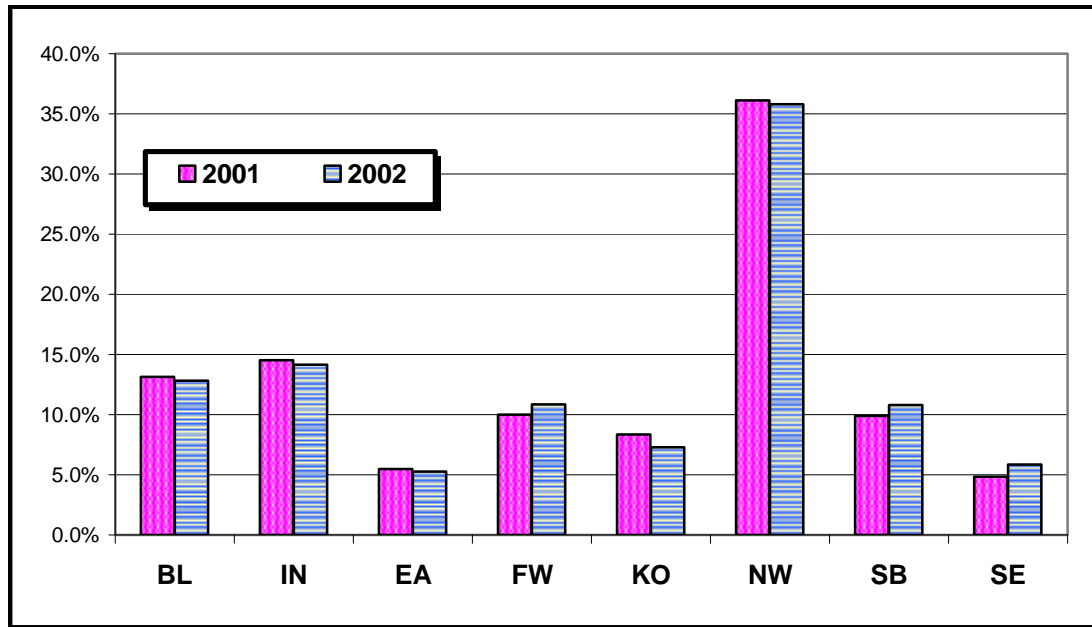
Campus Enrollment Summary

By Ethnicity

	American Indian			Asian-American			African-American			Hispanic			Other		
	#	% Change	% of Campus Total	#	% Change	% of Campus Total	#	% Change	% of Campus Total	#	% Change	% of Campus Total	#	% Change	% of Campus Total
BL	17	-32.0%	0.2%	331	8.2%	3.9%	529	-1.9%	6.3%	202	13.5%	2.4%	7,339	5.8%	87.2%
IN	14	-17.6%	0.2%	306	7.4%	3.3%	821	4.2%	8.9%	156	20.9%	1.7%	7,884	9.9%	85.9%
EA	8	166.7%	1.1%	4	-42.9%	0.5%	21	-12.5%	2.8%	6	200.0%	0.8%	699	12.0%	94.7%
FW	4	0.0%	0.2%	26	-3.7%	1.5%	115	33.7%	6.8%	37	48.0%	2.2%	1,498	17.0%	89.2%
KO	0	-100.0%	0.0%	16	100.0%	2.2%	31	-20.5%	4.3%	6	-53.8%	0.8%	672	-2.9%	92.7%
NW	6	0.0%	0.3%	22	0.0%	1.2%	490	10.4%	26.7%	140	1.4%	7.6%	1,179	9.3%	64.2%
SB	11	57.1%	0.4%	27	-3.6%	1.1%	180	26.8%	7.0%	59	-9.2%	2.3%	2,290	3.9%	89.2%
SE	4	-20.0%	0.2%	16	45.5%	0.7%	97	32.9%	4.1%	20	17.6%	0.9%	2,212	5.6%	94.2%

FW - IU Students Only

Minority Enrollment as Percent of Total



Matriculants by Campus

	Heads		Hours	
	#	% Change	#	% Change
BL	1,127	5.3%	5,049.0	2.2%
IN	924	-2.2%	3,533.5	-1.1%
EA	74	-1.3%	312.0	11.8%
FW	134	24.1%	513.0	19.3%
KO	70	-27.1%	317.0	-24.0%
NW	182	27.3%	697.0	27.4%
SB	231	0.4%	888.0	1.5%
SE	147	-7.5%	562.0	-13.3%

Source Information

Todd Schmitz, Dir., Reporting & Research Services

Lisa Newlin-Blackwell, Management Reporting Analyst

Poplars 018 (812) 855-9893

<http://www.indiana.edu/~urr/>