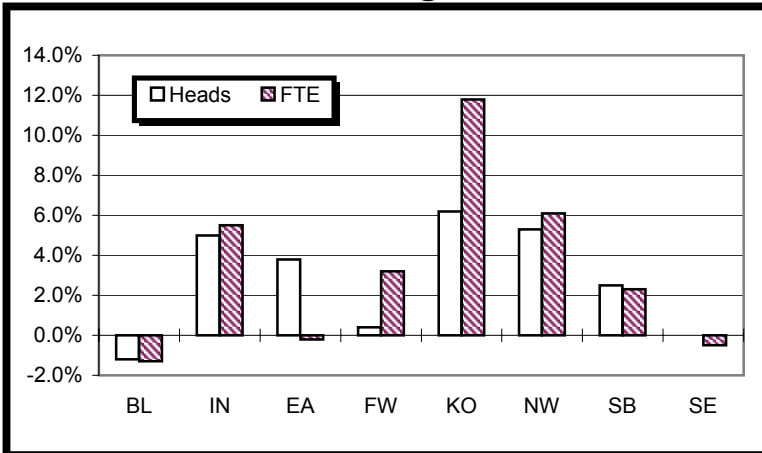




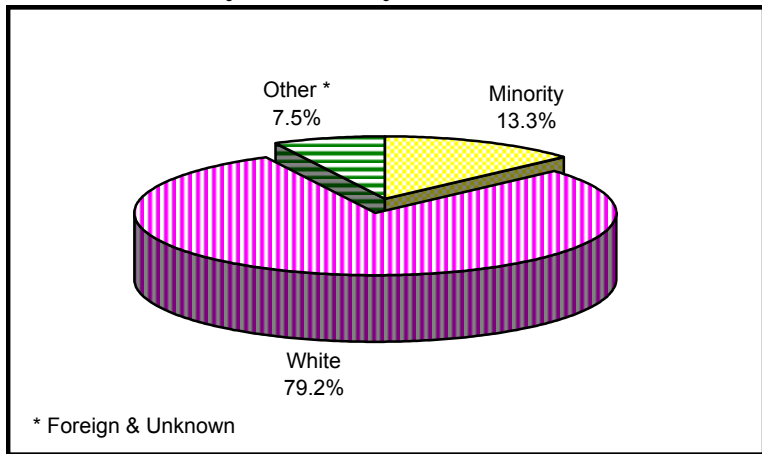
Enrollment Percent Change



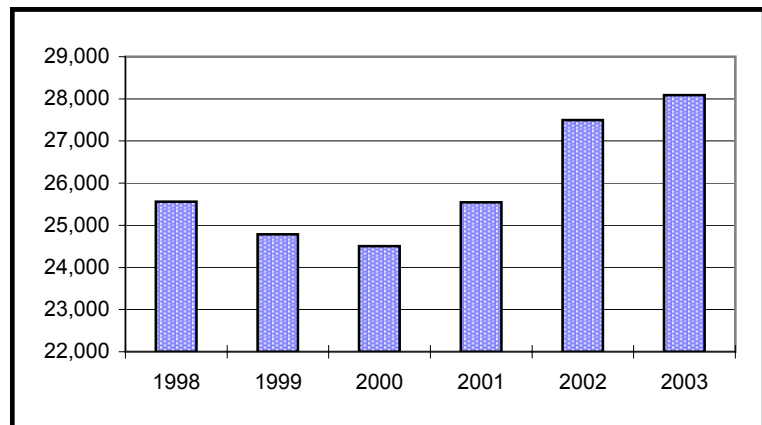
University Enrollment Summary

	#	% Change(a)
Headcount	28,091	2.2%
Credit Hours	115,005.0	2.3%
FTE	8,151.2	2.3%
<b>Students By Class (b)</b>		
Freshman	2,599	-2.4%
Sophomore	3,680	0.8%
Junior	3,658	1.4%
Senior	7,274	7.6%
<b>Students By Level</b>		
Undergraduate	17,211	3.2%
Graduate	5,343	5.3%
Professional	1,134	12.6%
Sp. Undergrad	1,940	-8.8%
Sp. Graduate	2,463	-5.4%
<b>Sex</b>		
Male	11,157	3.5%
Female	16,934	1.3%
<b>Ethnicity</b>		
Amer. Indian	86	34.4%
Asian	755	0.9%
Black	2,301	0.7%
Hispanic	595	-5.0%
White	22,255	1.2%
Foreign	1,722	21.1%
Unknown	377	2.2%
<b>Undergraduates By FT/PT (b)</b>		
FT-UG	5,718	4.1%
PT-UG	11,493	2.7%
<b>Residency</b>		
Resident	23,050	1.6%
Non-Resident	5,041	4.8%

Enrollment By Ethnicity



Historical Summer II Enrollment



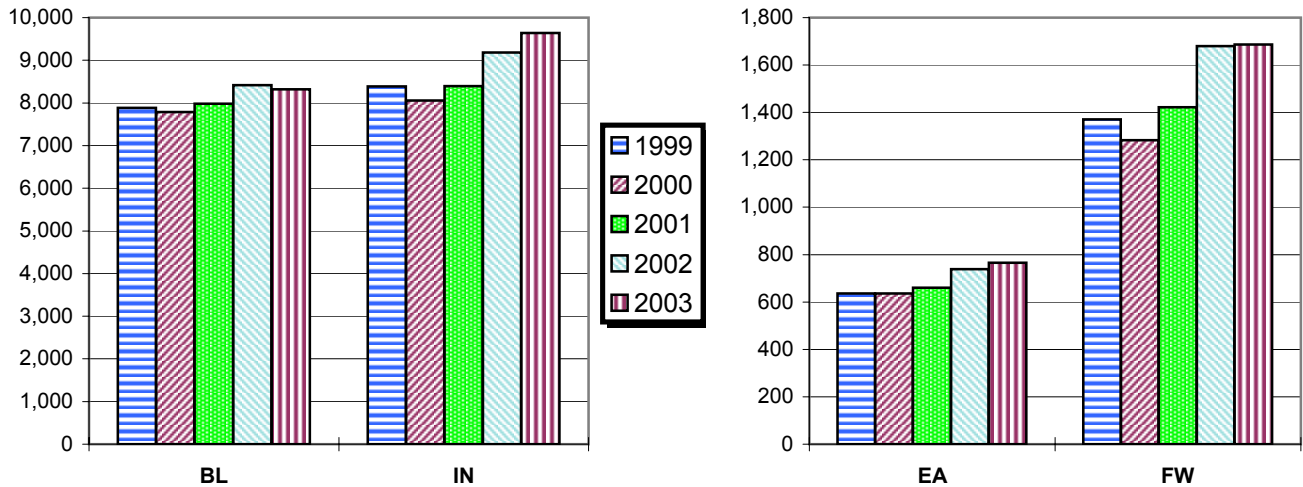
(a) Compared with Summer II, 2002  
(b) Degree-seeking only

# Campus Enrollment Summary

## By Headcount, Credit Hours, and FTE

	Headcount		Credit Hours		FTE	
	#	% Change	#	% Change	#	% Change
<b>BL</b>	8,317	-1.2%	37,564.0	-1.5%	2,677.1	-1.3%
<b>IN</b>	9,638	5.0%	37,615.0	5.4%	2,672.8	5.5%
<b>EA</b>	766	3.8%	3,163.0	-0.3%	212.4	-0.2%
<b>FW</b>	1,687	0.4%	6,517.0	3.6%	459.6	3.2%
<b>KO</b>	770	6.2%	3,062.0	12.0%	209.9	11.8%
<b>NW</b>	1,935	5.3%	7,732.0	6.3%	543.6	6.1%
<b>SB</b>	2,630	2.5%	10,085.0	3.1%	721.2	2.3%
<b>SE</b>	2,348	0.0%	9,267.0	-0.6%	654.5	-0.5%

## Historical Second Summer Session Enrollment



## By Undergraduate Enrollment Status

	Full-Time UG		Part-Time UG	
	#	% Change	#	% Change
<b>BL</b>	2,448	-2.7%	2,477	0.9%
<b>IN</b>	1,422	11.2%	3,814	1.6%
<b>EA</b>	218	-3.1%	460	6.2%
<b>FW</b>	302	25.8%	936	-2.6%
<b>KO</b>	153	33.0%	470	5.1%
<b>NW</b>	400	17.0%	856	3.9%
<b>SB</b>	383	4.1%	1,264	10.3%
<b>SE</b>	392	-3.4%	1,216	3.8%

## By Residency

	Resident		Non-Resident	
	#	% Change	#	% Change
<b>BL</b>	5,071	-3.4%	3,246	2.5%
<b>IN</b>	8,778	4.9%	860	5.9%
<b>EA</b>	704	3.5%	62	6.9%
<b>FW</b>	1,611	0.8%	76	-7.3%
<b>KO</b>	768	6.7%	2	-60.0%
<b>NW</b>	1,904	4.6%	31	82.4%
<b>SB</b>	2,483	2.0%	147	11.4%
<b>SE</b>	1,731	-4.4%	617	14.7%

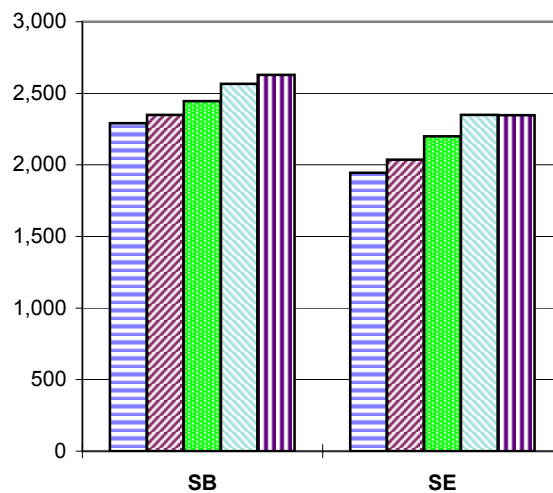
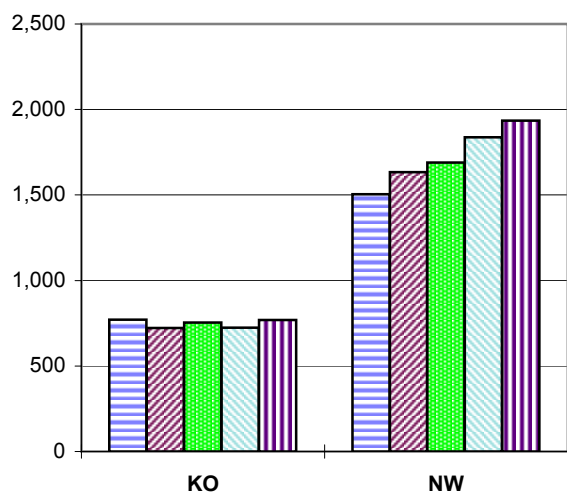
FW - IU Students Only

# Campus Enrollment Summary

## By Undergraduate Class Standing

	Freshman		Sophomore		Junior		Senior	
	#	% Change	#	% Change	#	% Change	#	% Change
<b>BL</b>	705	-11.8%	489	-4.9%	1,189	-3.7%	2,542	4.9%
<b>IN</b>	601	-2.6%	1,296	-2.6%	1,069	2.5%	2,270	11.1%
<b>EA</b>	220	2.8%	172	-3.4%	116	17.2%	170	1.8%
<b>FW</b>	196	1.6%	310	-2.8%	254	-1.6%	478	10.9%
<b>KO</b>	129	19.4%	217	13.0%	104	1.0%	173	8.8%
<b>NW</b>	267	8.5%	365	5.5%	214	22.3%	410	2.8%
<b>SB</b>	291	5.1%	445	4.7%	349	19.5%	562	8.1%
<b>SE</b>	190	-9.5%	386	10.9%	363	-9.9%	669	8.4%

## Historical Second Summer Session Enrollment



## Graduate and Professional Enrollment

	Graduate		Professional	
	#	% Change	#	% Change
<b>BL</b>	1,935	4.5%	297	-15.9%
<b>IN</b>	1,783	11.0%	837	28.0%
<b>EA</b>	0	-100.0%		
<b>FW</b>	265	-11.1%		
<b>KO</b>	45	9.8%		
<b>NW</b>	268	19.6%		
<b>SB</b>	576	-6.3%		
<b>SE</b>	471	8.0%		

FW - IU Students Only

## By Sex

	Male		Female	
	#	% Change	#	% Change
<b>BL</b>	3,974	-1.9%	4,343	-0.5%
<b>IN</b>	3,991	8.9%	5,647	2.4%
<b>EA</b>	192	6.7%	574	2.9%
<b>FW</b>	602	8.5%	1,085	-3.6%
<b>KO</b>	199	3.1%	571	7.3%
<b>NW</b>	554	3.6%	1,381	6.1%
<b>SB</b>	871	5.6%	1,759	1.0%
<b>SE</b>	774	0.4%	1,574	-0.3%

