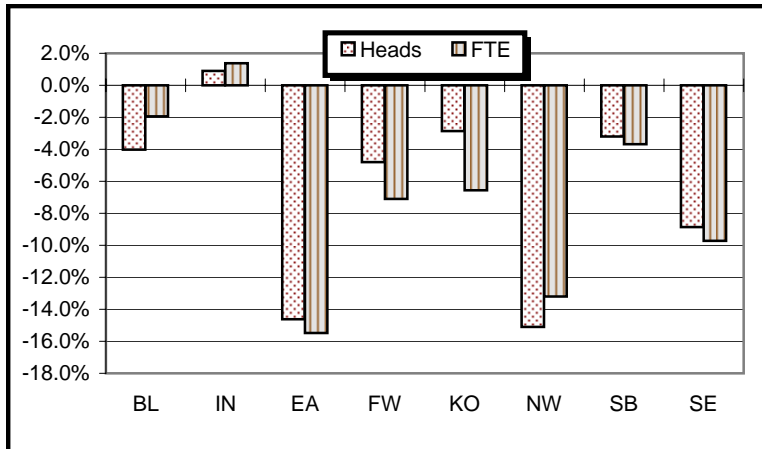
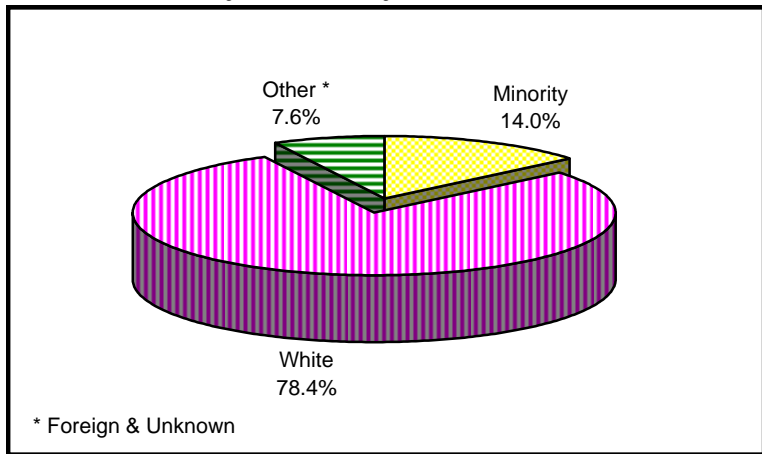




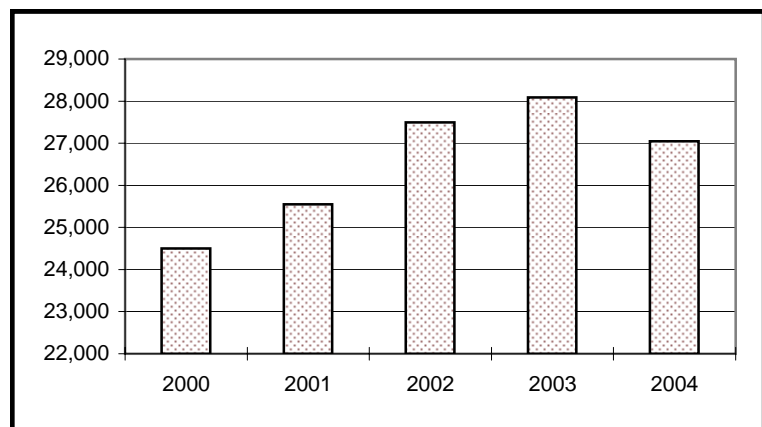
Enrollment Percent Change



Enrollment By Ethnicity



Historical Summer II Enrollment



University Enrollment Summary

	#	% Change(a)
Headcount	27,044	-3.7%
Credit Hours	111,169.5	-3.3%
FTE	7,895.0	-3.1%
Students By Class (b)		
Freshman	2,212	-14.9%
Sophomore	3,257	-11.5%
Junior	3,467	-5.2%
Senior	7,175	-1.4%
Students By Level		
Undergraduate	16,111	-6.4%
Graduate	5,394	1.0%
Professional	1,291	13.8%
Sp. Undergrad	1,771	-8.7%
Sp. Graduate	2,477	0.6%
Sex		
Male	10,900	-2.3%
Female	16,144	-4.7%
Ethnicity		
Amer. Indian	80	-7.0%
Asian	764	1.2%
Black	2,312	0.5%
Hispanic	625	5.0%
White	21,204	-4.7%
Foreign	1,653	-4.0%
Unknown	406	7.7%
Undergraduates By FT/PT (b)		
FT-UG	5,579	-2.4%
PT-UG	10,532	-8.4%
Residency		
Resident	21,930	-4.9%
Non-Resident	5,114	1.4%

(a) Compared with Summer II, 2003

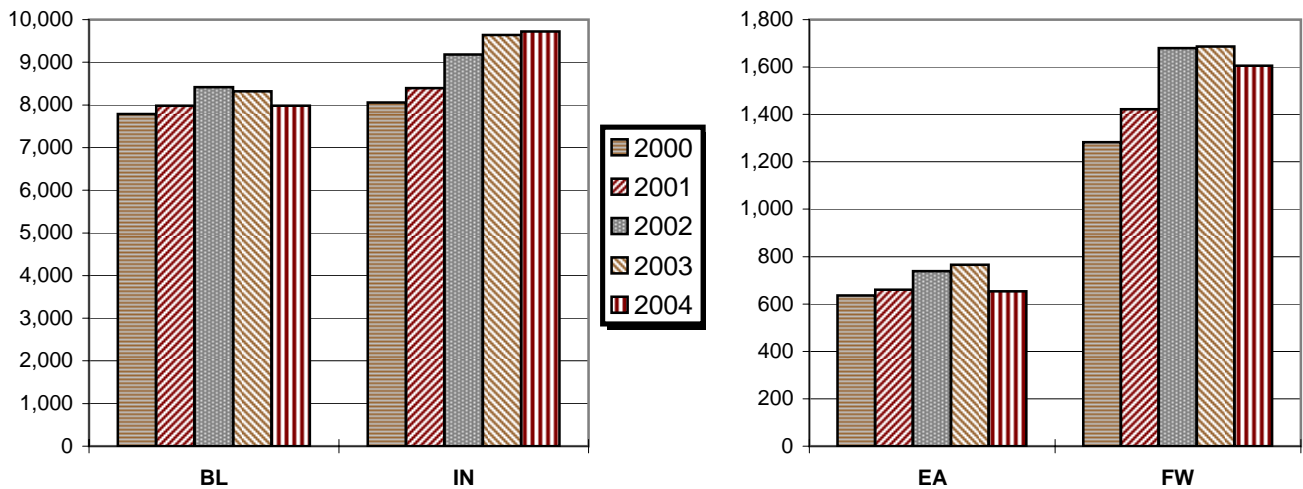
(b) Degree-seeking only

Campus Enrollment Summary

By Headcount, Credit Hours, and FTE

	Headcount		Credit Hours		FTE	
	#	% Change	#	% Change	#	% Change
BL	7,982	-4.0%	36,817.0	-2.0%	2,625.4	-1.9%
IN	9,725	0.9%	37,998.5	1.0%	2,709.6	1.4%
EA	654	-14.6%	2,660.0	-15.9%	179.5	-15.5%
FW	1,606	-4.8%	6,021.0	-7.6%	426.9	-7.1%
KO	748	-2.9%	2,874.0	-6.1%	196.1	-6.6%
NW	1,643	-15.1%	6,719.0	-13.1%	471.9	-13.2%
SB	2,546	-3.2%	9,718.0	-3.6%	694.6	-3.7%
SE	2,140	-8.9%	8,362.0	-9.8%	591.0	-9.7%

Historical Second Summer Session Enrollment



By Undergraduate Enrollment Status

	Full-Time UG		Part-Time UG	
	#	% Change	#	% Change
BL	2,392	-2.3%	2,211	-10.7%
IN	1,479	4.0%	3,569	-6.4%
EA	168	-22.9%	392	-14.8%
FW	242	-19.9%	885	-5.4%
KO	147	-3.9%	471	0.2%
NW	381	-4.8%	725	-15.3%
SB	386	0.8%	1,206	-4.6%
SE	384	-2.0%	1,073	-11.8%

By Residency

	Resident		Non-Resident	
	#	% Change	#	% Change
BL	4,843	-4.5%	3,139	-3.3%
IN	8,609	-1.9%	1,116	29.8%
EA	590	-16.2%	64	3.2%
FW	1,519	-5.7%	87	14.5%
KO	742	-3.4%	6	200.0%
NW	1,628	-14.5%	15	-51.6%
SB	2,417	-2.7%	129	-12.2%
SE	1,582	-8.6%	558	-9.6%

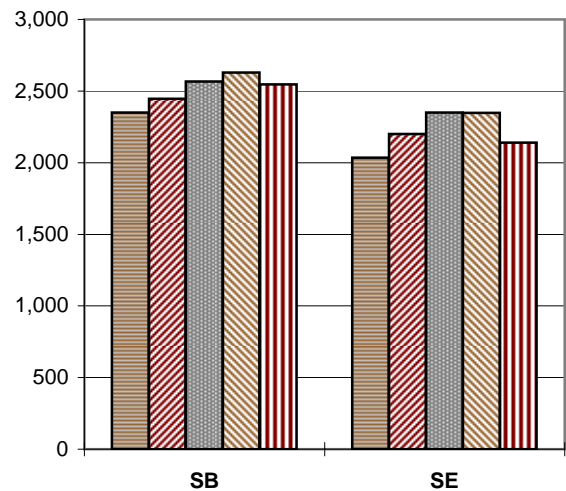
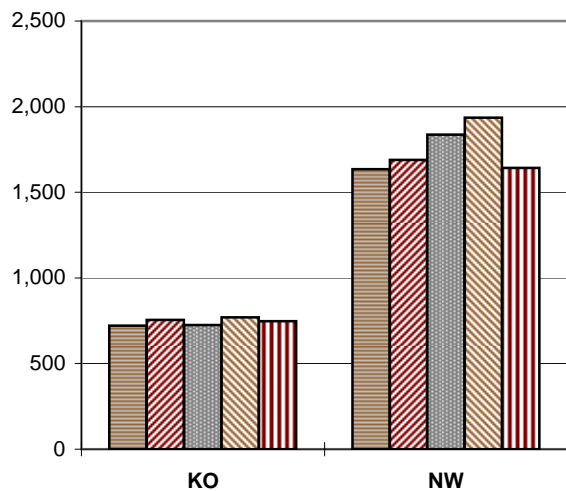
FW - IU Students Only

Campus Enrollment Summary

By Undergraduate Class Standing

	Freshman		Sophomore		Junior		Senior	
	#	% Change	#	% Change	#	% Change	#	% Change
BL	645	-8.5%	397	-18.8%	1,157	-2.7%	2,404	-5.4%
IN	457	-24.0%	1,189	-8.3%	1,001	-6.4%	2,401	5.8%
EA	151	-31.4%	142	-17.4%	95	-18.1%	172	1.2%
FW	190	-3.1%	278	-10.3%	247	-2.8%	412	-13.8%
KO	125	-3.1%	222	2.3%	87	-16.3%	184	6.4%
NW	191	-28.5%	328	-10.1%	208	-2.8%	379	-7.6%
SB	270	-7.2%	373	-16.2%	342	-2.0%	607	8.0%
SE	183	-3.7%	328	-15.0%	330	-9.1%	616	-7.9%

Historical Second Summer Session Enrollment



Graduate and Professional Enrollment

	Graduate		Professional	
	#	% Change	#	% Change
BL	1,851	-4.3%	309	4.0%
IN	2,019	13.2%	982	17.3%
EA	1	100.0%		
FW	245	-7.5%		
KO	42	-6.7%		
NW	240	-10.4%		
SB	569	-1.2%		
SE	427	-9.3%		

FW - IU Students Only

By Sex

	Male		Female	
	#	% Change	#	% Change
BL	3,769	-5.2%	4,213	-3.0%
IN	4,087	2.4%	5,638	-0.2%
EA	187	-2.6%	467	-18.6%
FW	563	-6.5%	1,043	-3.9%
KO	196	-1.5%	552	-3.3%
NW	513	-7.4%	1,130	-18.2%
SB	807	-7.3%	1,739	-1.1%
SE	778	0.5%	1,362	-13.5%

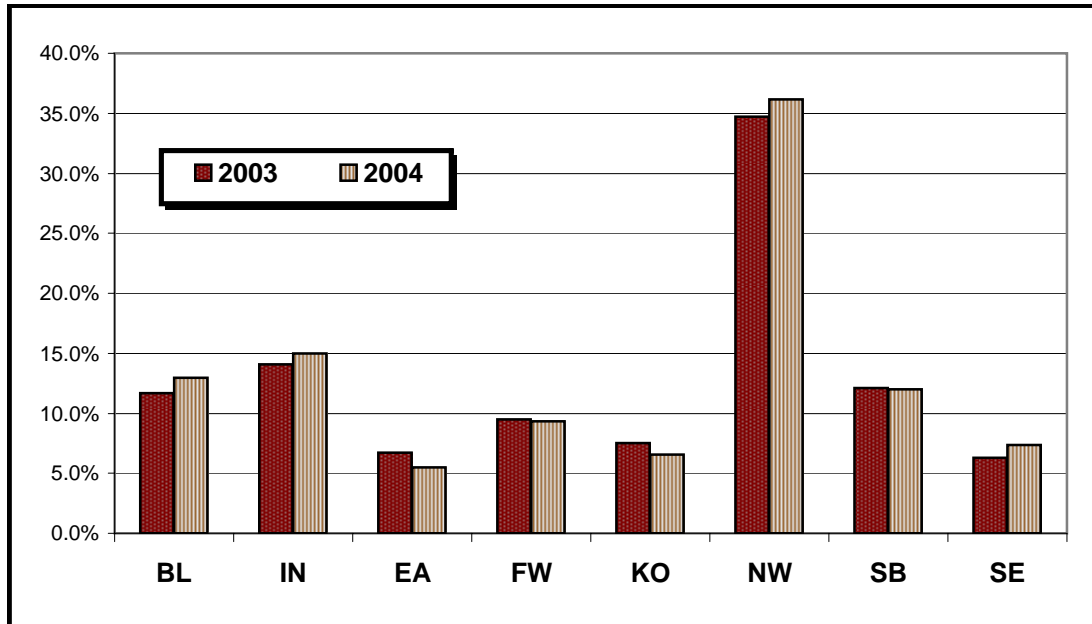
Campus Enrollment Summary

By Ethnicity

	American Indian			Asian-American			African-American			Hispanic			Other		
	#	% Change	% of Campus Total	#	% Change	% of Campus Total	#	% Change	% of Campus Total	#	% Change	% of Campus Total	#	% Change	% of Campus Total
BL	19	11.8%	0.2%	298	5.3%	3.7%	529	8.0%	6.6%	188	4.4%	2.4%	6,948	-5.4%	87.0%
IN	28	12.0%	0.3%	349	4.5%	3.6%	903	5.1%	9.3%	175	24.1%	1.8%	8,270	-0.1%	85.0%
EA	3	-50.0%	0.5%	2	-50.0%	0.3%	25	-32.4%	3.8%	6	50.0%	0.9%	618	-13.6%	94.5%
FW	3	-57.1%	0.2%	18	-30.8%	1.1%	87	-10.3%	5.4%	42	40.0%	2.6%	1,456	-4.6%	90.7%
KO	3	-25.0%	0.4%	9	12.5%	1.2%	31	-18.4%	4.1%	6	-25.0%	0.8%	699	-1.8%	93.4%
NW	3	-57.1%	0.2%	25	-28.6%	1.5%	434	-9.2%	26.4%	132	-13.2%	8.0%	1,049	-16.9%	63.8%
SB	15	25.0%	0.6%	38	-9.5%	1.5%	199	-0.5%	7.8%	53	-18.5%	2.1%	2,241	-3.0%	88.0%
SE	6	-25.0%	0.3%	25	8.7%	1.2%	104	2.0%	4.9%	23	53.3%	1.1%	1,982	-9.9%	92.6%

FW - IU Students Only

Minority Enrollment as Percent of Total



Matriculants by Campus

	Heads		Hours	
	#	% Change	#	% Change
BL	1,079	0.0%	5,287.0	8.3%
IN	819	3.7%	3,124.5	3.8%
EA	68	-36.4%	265.0	-37.4%
FW	130	11.1%	548.0	15.4%
KO	85	-5.6%	376.0	-6.2%
NW	132	-19.5%	502.0	-24.6%
SB	208	-1.0%	838.0	0.0%
SE	135	-12.3%	510.0	-18.1%

Source Information

University Reporting & Research
 Poplars 017 - 018
 (812) 855 - 9893
<http://www.indiana.edu/~urri/>