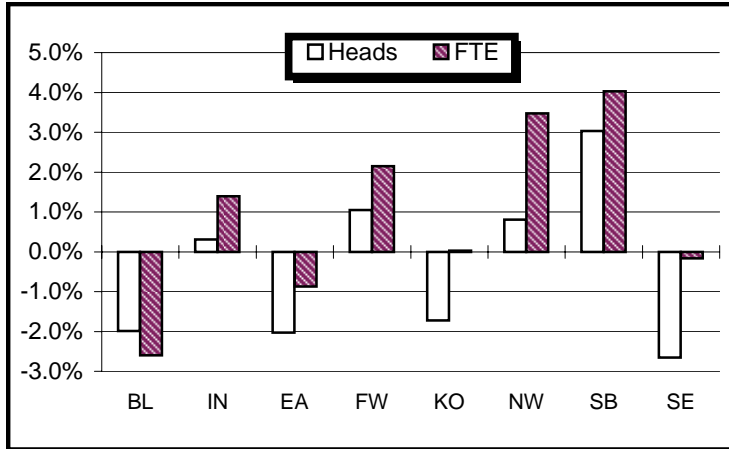
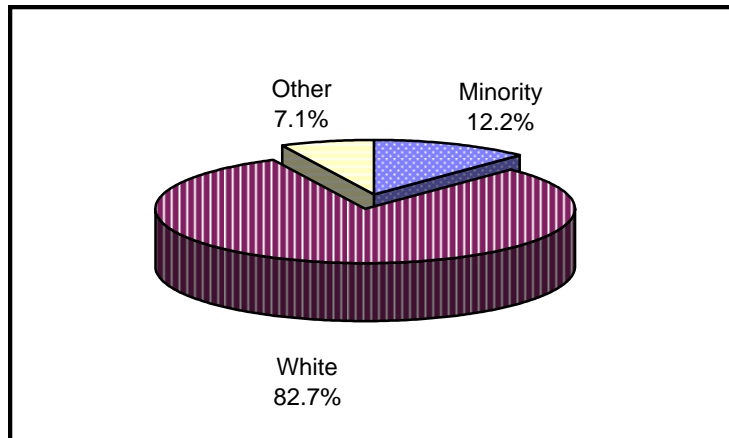




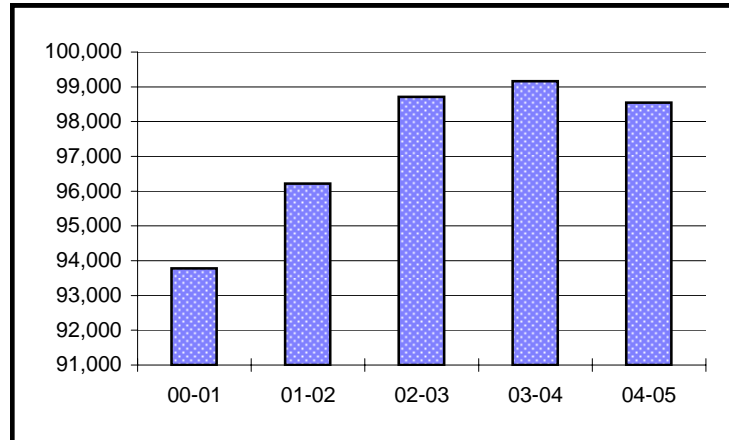
Enrollment Percent Change



Enrollment By Ethnicity



Historical First Semester Enrollment



University Enrollment Summary

	#	% Change(a)
Headcount	98,545	-0.6%
Credit Hours	1,115,163.5	-0.4%
FTE	76,372.2	-0.3%
<b>Students By Class (b)</b>		
Freshman	22,290	0.2%
Sophomore	19,599	-3.8%
Junior	14,077	-0.8%
Senior	19,651	1.2%
<b>Students By Level</b>		
Undergraduate	75,617	-0.8%
Graduate	13,657	0.0%
Professional	3,408	1.2%
Sp. Undergrad.	2,446	-7.7%
Sp. Graduate	3,417	5.1%
<b>Sex</b>		
Male	41,701	-0.1%
Female	56,844	-1.0%
<b>Ethnicity</b>		
Amer. Indian	307	0.7%
Asian-Amer.	2,457	3.8%
African-Amer.	6,768	2.7%
Hispanic	2,493	6.7%
White	79,524	-1.9%
Foreign	4,563	-10.4%
Unknown	2,433	75.5%
<b>Undergraduates By FT/PT</b>		
FT-UG	56,828	0.0%
PT-UG	18,789	-3.2%
<b>Residency</b>		
Resident	78,290	-0.9%
Non-Resident	20,255	0.4%

(a) Compared with First Semester, 2003-04

(b) Degree-seeking only

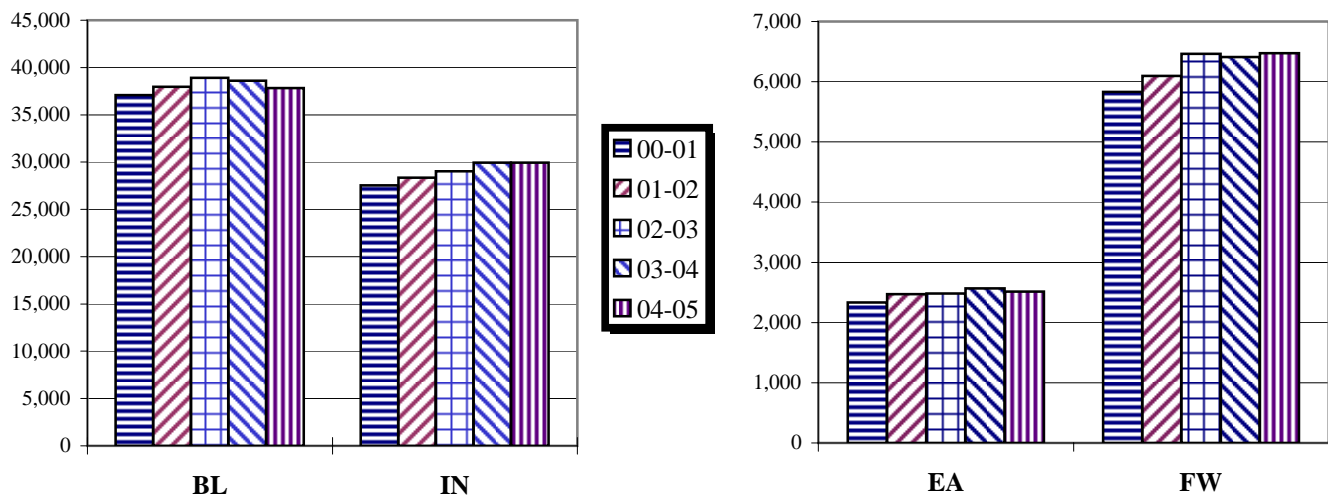
# Campus Enrollment Summary

## By Headcount, Credit Hours, and FTE

	Headcount		Credit Hours		FTE	
	#	% Change	#	% Change	#	% Change
<b>BL</b>	37,821	-2.0%	505,115.0	-2.7%	34,766.4	-2.6%
<b>IN<sup>1</sup></b>	29,953	0.3%	312,225.5	1.3%	21,464.6	1.4%
<b>EA</b>	2,516	-2.0%	23,993.5	-0.9%	1,603.6	-0.9%
<b>FW</b>	6,475	1.0%	65,407.0	2.2%	4,409.8	2.1%
<b>KO</b>	2,903	-1.7%	27,925.0	0.2%	1,875.1	0.0%
<b>NW</b>	5,138	0.8%	49,307.0	3.6%	3,340.8	3.5%
<b>SB</b>	7,501	3.0%	70,519.0	4.1%	4,807.7	4.0%
<b>SE</b>	6,238	-2.7%	60,671.5	-0.2%	4,104.1	-0.2%

<sup>1</sup> Indianapolis headcounts are unduplicated as of First Semester, 2001-02.

## Historical First Semester Enrollment



## By Undergraduate Enrollment Status

	Full-Time UG		Part-Time UG	
	#	% Change	#	% Change
<b>BL</b>	27,657	-2.9%	1,405	8.5%
<b>IN</b>	13,547	2.0%	7,297	-5.6%
<b>EA</b>	1,273	0.2%	902	-8.1%
<b>FW</b>	3,661	5.1%	2,110	-4.0%
<b>KO</b>	1,414	-0.6%	1,091	-0.9%
<b>NW</b>	2,528	6.6%	1,662	5.9%
<b>SB</b>	3,511	3.0%	2,340	0.0%
<b>SE</b>	3,237	4.1%	1,982	-9.9%

## By Residency

	Resident		Non-Resident	
	#	% Change	#	% Change
<b>BL</b>	22,544	-2.2%	15,277	-1.7%
<b>IN</b>	27,549	-0.5%	2,404	10.6%
<b>EA</b>	2,222	-4.3%	294	19.5%
<b>FW</b>	6,164	0.8%	311	5.4%
<b>KO</b>	2,876	-2.0%	27	35.0%
<b>NW</b>	5,079	0.8%	59	0.0%
<b>SB</b>	7,113	3.2%	388	0.8%
<b>SE</b>	4,743	-4.4%	1,495	3.2%

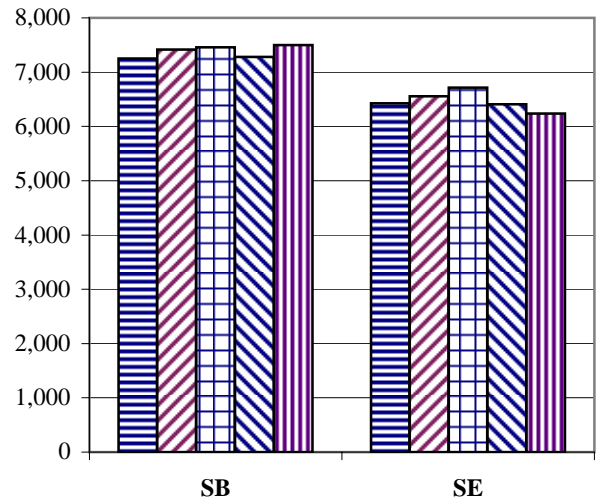
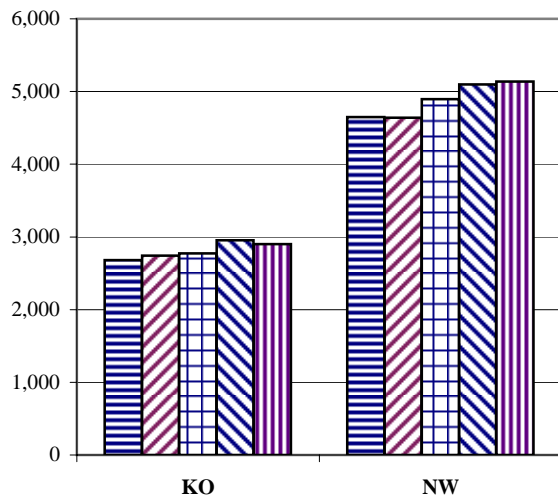
FW - IU Students Only

# Campus Enrollment Summary

## By Undergraduate Class Standing

	Freshman		Sophomore		Junior		Senior	
	#	% Change	#	% Change	#	% Change	#	% Change
<b>BL</b>	7,102	-6.9%	7,159	-4.1%	6,726	2.6%	8,075	-0.6%
<b>IN</b>	5,577	-3.1%	5,786	-2.6%	3,505	-3.6%	5,976	5.1%
<b>EA</b>	887	-11.7%	614	1.3%	277	10.4%	397	1.8%
<b>FW</b>	2,496	35.1%	1,218	-22.2%	842	-2.9%	1,215	-13.1%
<b>KO</b>	979	-2.7%	802	4.0%	287	-13.6%	437	5.3%
<b>NW</b>	1,603	7.2%	1,238	0.1%	516	5.1%	833	16.0%
<b>SB</b>	1,997	7.6%	1,431	-5.6%	959	-6.7%	1,464	8.4%
<b>SE</b>	1,649	-0.8%	1,351	6.0%	965	-6.5%	1,254	-6.4%

## Historical First Semester Enrollment



## Graduate and Professional Enrollment

	Graduate		Professional	
	#	% Change	#	% Change
<b>BL</b>	6,826	-0.7%	937	0.4%
<b>IN</b>	4,383	5.5%	2,471	1.5%
<b>EA</b>	0	n/a		
<b>FW</b>	513	-2.5%		
<b>KO</b>	72	-36.3%		
<b>NW</b>	375	-0.8%		
<b>SB</b>	855	-7.2%		
<b>SE</b>	633	-8.1%		

FW - IU Students Only

## By Sex

	Male		Female	
	#	% Change	#	% Change
<b>BL</b>	18,294	-1.1%	19,527	-2.8%
<b>IN</b>	12,681	1.1%	17,272	-0.2%
<b>EA</b>	761	0.4%	1,755	-3.0%
<b>FW</b>	2,538	3.2%	3,937	-0.3%
<b>KO</b>	822	-6.3%	2,081	0.2%
<b>NW</b>	1,538	-1.1%	3,600	1.6%
<b>SB</b>	2,714	2.1%	4,787	3.6%
<b>SE</b>	2,353	-1.9%	3,885	-3.1%

# Campus Enrollment Summary

## By Ethnicity

	American Indian			Asian-American			African-American			Hispanic			Other		
	#	% Change	% of Campus Total	#	% Change	% of Campus Total	#	% Change	% of Campus Total	#	% Change	% of Campus Total	#	% Change	% of Campus Total
<b>BL</b>	91	3.4%	0.2%	1,223	-0.3%	3.2%	1,524	3.4%	4.0%	856	4.9%	2.3%	34,127	-2.4%	90.2%
<b>IN</b>	96	1.1%	0.3%	882	8.1%	2.9%	2,814	3.5%	9.4%	612	13.1%	2.0%	25,549	-0.5%	85.3%
<b>EA</b>	11	-21.4%	0.4%	15	15.4%	0.6%	110	-5.2%	4.4%	17	-19.0%	0.7%	2,363	-1.7%	93.9%
<b>FW</b>	19	-17.4%	0.3%	86	8.9%	1.3%	324	5.5%	5.0%	160	3.2%	2.5%	5,886	0.7%	90.9%
<b>KO</b>	14	-6.7%	0.5%	29	7.4%	1.0%	93	-13.9%	3.2%	33	-26.7%	1.1%	2,734	-0.9%	94.2%
<b>NW</b>	19	-13.6%	0.4%	68	3.0%	1.3%	1,195	1.7%	23.3%	566	8.0%	11.0%	3,290	-0.6%	64.0%
<b>SB</b>	40	17.6%	0.5%	95	13.1%	1.3%	476	5.1%	6.3%	192	-1.0%	2.6%	6,698	2.8%	89.3%
<b>SE</b>	17	21.4%	0.3%	59	9.3%	0.9%	232	-1.7%	3.7%	57	39.0%	0.9%	5,873	-3.1%	94.1%

## Matriculants By Campus

	Heads		Hours	
	#	% Change	#	% Change
<b>BL</b>	8,865	9.5%	125,672.0	9.7%
<b>IN</b>	6,541	22.6%	70,958.0	20.1%
<b>EA</b>	732	1.2%	6,131.0	0.8%
<b>FW</b>	1,514	13.2%	16,636.0	15.3%
<b>KO</b>	838	-0.5%	7,601.0	-0.4%
<b>NW</b>	1,260	0.6%	12,484.0	2.9%
<b>SB</b>	1,868	26.0%	17,627.0	22.3%
<b>SE</b>	1,331	5.0%	14,388.0	7.0%

FW - IU Students Only

## Undergraduate Beginners By Campus <sup>1</sup>

	Heads		Hours	
	#	% Change	#	% Change
<b>BL</b>	6,352	-6.4%	95,316.0	-6.9%
<b>IN</b>	2,720	-3.8%	34,292.0	-2.6%
<b>EA</b>	406	-14.3%	4,263.0	-15.3%
<b>FW</b>	993	14.3%	12,213.0	17.8%
<b>KO</b>	466	-16.3%	5,364.0	-13.0%
<b>NW</b>	762	-11.4%	8,843.0	-10.5%
<b>SB</b>	889	-0.7%	10,329.0	-0.8%
<b>SE</b>	815	-1.1%	10,139.0	1.4%

<sup>1</sup> Defined by entry status and semester for retention/graduation reporting.

## Source Information

University Reporting & Research  
Poplars 017-018

(812) 855-9893

email: [urr@indiana.edu](mailto:urr@indiana.edu)

This report, and other official IU reports are available at <http://www.indiana.edu/~urr/>