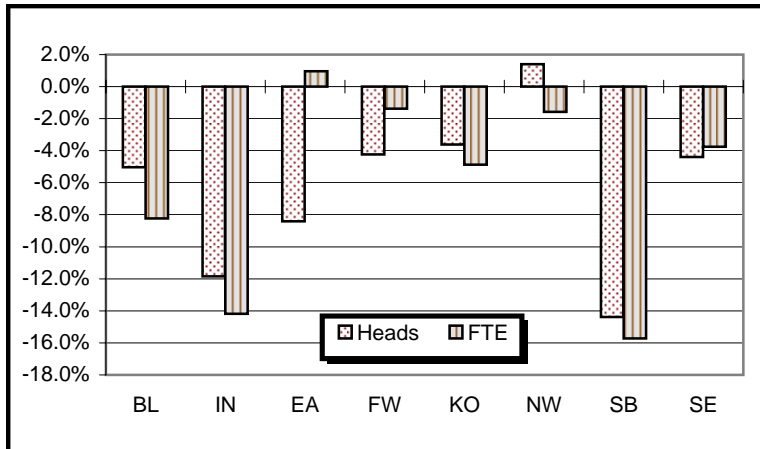
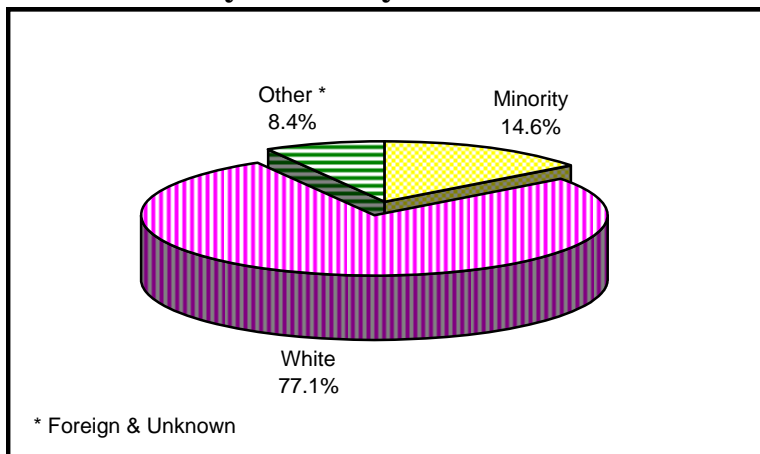




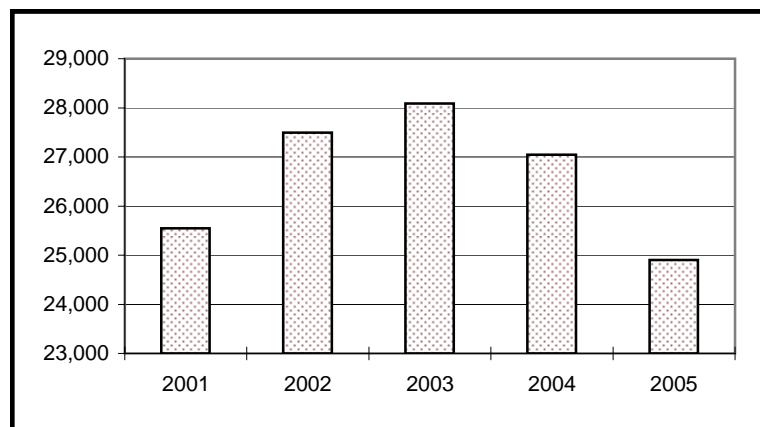
Enrollment Percent Change



Enrollment By Ethnicity



Historical Summer II Enrollment



University Enrollment Summary

	#	% Change(a)
Headcount	24,903	-7.9%
Credit Hours	100,255.0	-9.8%
FTE	7,142.1	-9.5%
Students By Class (b)		
Freshman	2,351	6.3%
Sophomore	3,072	-5.7%
Junior	3,428	-1.1%
Senior	6,337	-11.7%
Students By Level		
Undergraduate	15,188	-5.7%
Graduate	5,336	-1.1%
Professional	274	-78.8%
Sp. Undergrad	1,948	10.0%
Sp. Graduate	2,157	-12.9%
Sex		
Male	9,995	-8.3%
Female	14,908	-7.7%
Ethnicity		
Amer. Indian	87	8.8%
Asian	694	-9.2%
Afr. Amer.	2,214	-4.2%
Hispanic	640	2.4%
White	19,188	-9.5%
Foreign	1,529	-7.5%
Unknown	551	35.7%
Undergraduates By FT/PT (b)		
FT-UG	4,915	-11.9%
PT-UG	10,273	-2.5%
Residency		
Resident	20,107	-8.3%
Non-Resident	4,796	-6.2%

(a) Compared with Summer II, 2004

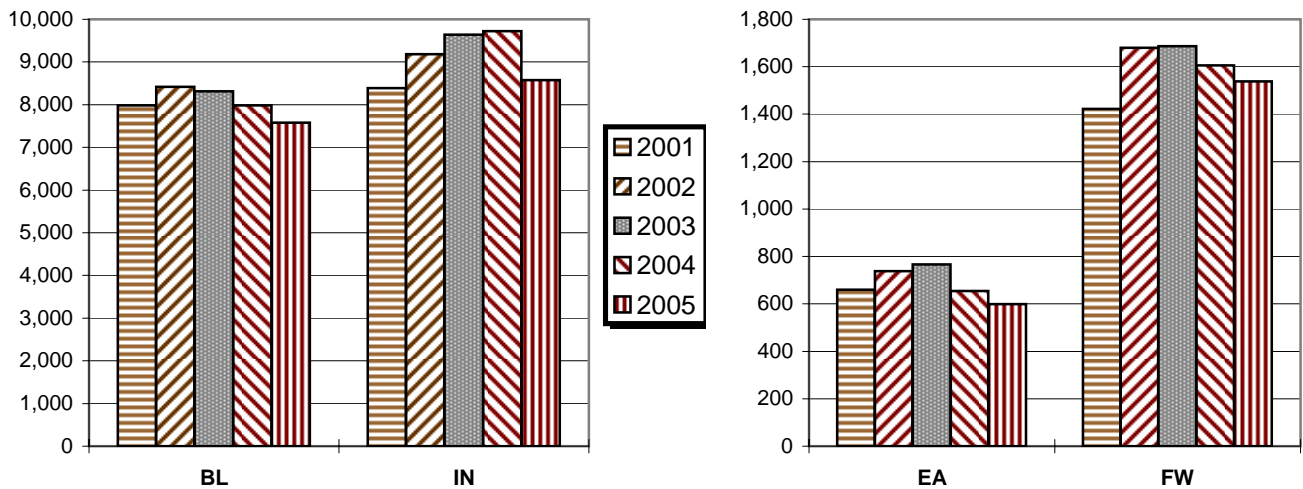
(b) Degree-seeking only

Campus Enrollment Summary

By Headcount, Credit Hours, and FTE

	Headcount		Credit Hours		FTE	
	#	% Change	#	% Change	#	% Change
BL	7,581	-5.0%	33,614.5	-8.7%	2,409.5	-8.2%
IN	8,572	-11.9%	32,483.5	-14.5%	2,325.2	-14.2%
EA	599	-8.4%	2,680.0	0.8%	181.3	1.0%
FW	1,538	-4.2%	5,913.0	-1.8%	421.0	-1.4%
KO	721	-3.6%	2,750.0	-4.3%	186.6	-4.9%
NW	1,666	1.4%	6,606.0	-1.7%	464.4	-1.6%
SB	2,180	-14.4%	8,189.0	-15.7%	585.4	-15.7%
SE	2,046	-4.4%	8,019.0	-4.1%	568.7	-3.8%

Historical Second Summer Session Enrollment



By Undergraduate Enrollment Status

	Full-Time UG		Part-Time UG	
	#	% Change	#	% Change
BL	2,084	-12.9%	2,299	4.0%
IN	1,297	-12.3%	3,581	0.3%
EA	194	15.5%	329	-16.1%
FW	241	-0.4%	800	-9.6%
KO	123	-16.3%	465	-1.3%
NW	340	-10.8%	810	11.7%
SB	296	-23.3%	965	-20.0%
SE	340	-11.5%	1,024	-4.6%

By Residency

	Resident		Non-Resident	
	#	% Change	#	% Change
BL	4,599	-5.0%	2,982	-5.0%
IN	7,673	-10.9%	899	-19.4%
EA	516	-12.5%	83	29.7%
FW	1,468	-3.4%	70	-19.5%
KO	712	-4.0%	9	50.0%
NW	1,647	1.2%	19	26.7%
SB	2,037	-15.7%	143	10.9%
SE	1,455	-8.0%	591	5.9%

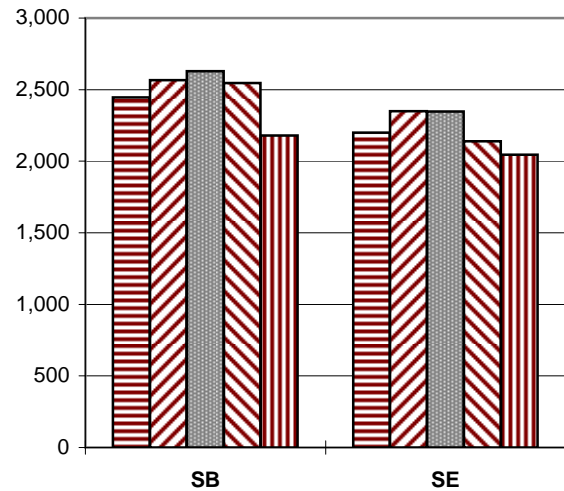
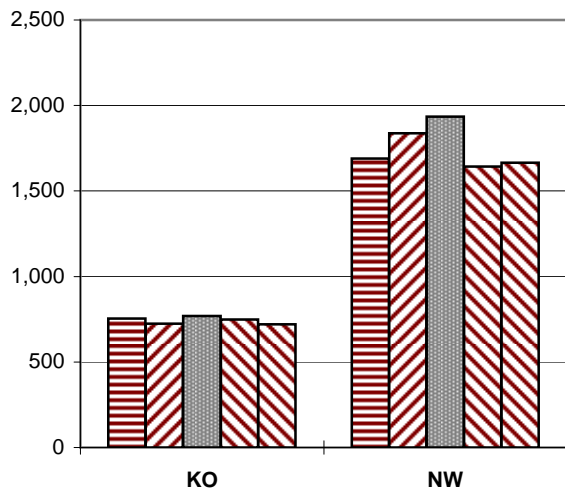
FW - IU Students Only

Campus Enrollment Summary

By Undergraduate Class Standing

	Freshman		Sophomore		Junior		Senior	
	#	% Change	#	% Change	#	% Change	#	% Change
BL	684	6.0%	427	7.6%	1,197	3.5%	2,075	-13.7%
IN	538	17.7%	1,129	-5.0%	1,004	0.3%	2,207	-8.1%
EA	137	-9.3%	125	-12.0%	124	30.5%	137	-20.3%
FW	227	19.5%	252	-9.4%	184	-25.5%	378	-8.3%
KO	143	14.4%	201	-9.5%	98	12.6%	146	-20.7%
NW	234	22.5%	323	-1.5%	193	-7.2%	400	5.5%
SB	216	-20.0%	297	-20.4%	265	-22.5%	483	-20.4%
SE	172	-6.0%	318	-3.0%	363	10.0%	511	-17.0%

Historical Second Summer Session Enrollment



Graduate and Professional Enrollment

	Graduate		Professional	
	#	% Change	#	% Change
BL	1,880	1.6%	143	-53.7%
IN	2,099	4.0%	131	-86.7%
EA	0	-100.0%		
FW	244	-0.4%		
KO	14	-66.7%		
NW	256	6.7%		
SB	459	-19.3%		
SE	384	-10.1%		

FW - IU Students Only

By Sex

	Male		Female	
	#	% Change	#	% Change
BL	3,503	-7.1%	4,078	-3.2%
IN	3,597	-12.0%	4,975	-11.8%
EA	176	-5.9%	423	-9.4%
FW	551	-2.1%	987	-5.4%
KO	191	-2.6%	530	-4.0%
NW	485	-5.5%	1,181	4.5%
SB	728	-9.8%	1,452	-16.5%
SE	764	-1.8%	1,282	-5.9%

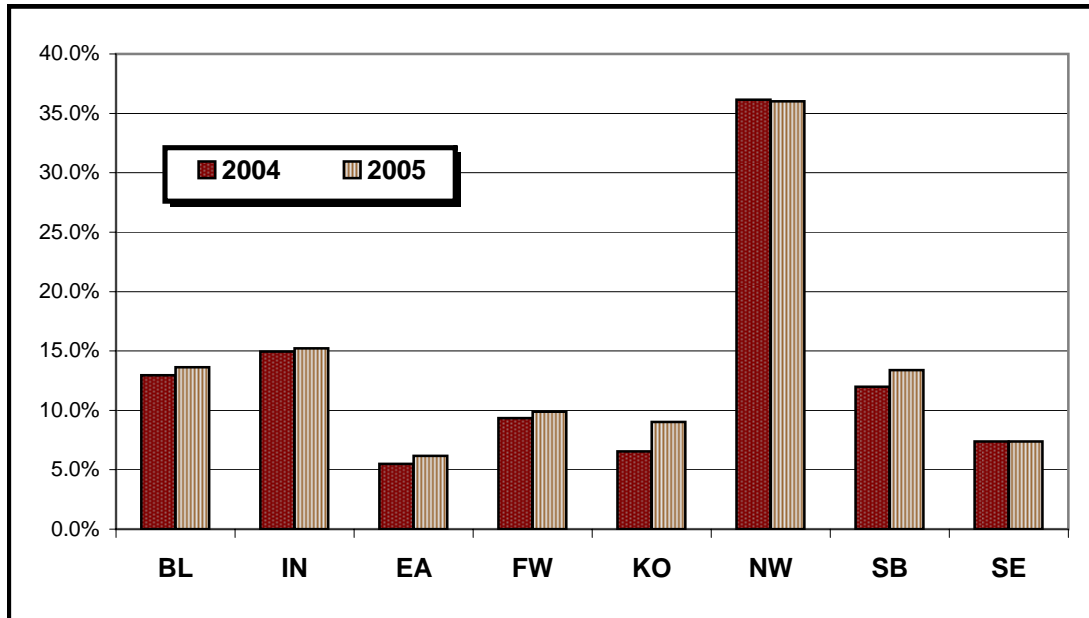
Campus Enrollment Summary

By Ethnicity

	American Indian			Asian-American			African-American			Hispanic			Other		
	#	% Change	% of Campus Total	#	% Change	% of Campus Total	#	% Change	% of Campus Total	#	% Change	% of Campus Total	#	% Change	% of Campus Total
BL	14	-26.3%	0.2%	280	-6.0%	3.7%	553	4.5%	7.3%	186	-1.1%	2.5%	6,548	-5.8%	86.4%
IN	35	25.0%	0.4%	278	-20.3%	3.2%	825	-8.6%	9.6%	167	-4.6%	1.9%	7,267	-12.1%	84.8%
EA	5	66.7%	0.8%	3	50.0%	0.5%	24	-4.0%	4.0%	5	-16.7%	0.8%	562	-9.1%	93.8%
FW	7	133.3%	0.5%	27	50.0%	1.8%	93	6.9%	6.0%	25	-40.5%	1.6%	1,386	-4.8%	90.1%
KO	3	0.0%	0.4%	4	-55.6%	0.6%	43	38.7%	6.0%	15	150.0%	2.1%	656	-6.2%	91.0%
NW	4	33.3%	0.2%	41	64.0%	2.5%	395	-9.0%	23.7%	160	21.2%	9.6%	1,066	1.6%	64.0%
SB	13	-13.3%	0.6%	40	5.3%	1.8%	179	-10.1%	8.2%	60	13.2%	2.8%	1,888	-15.8%	86.6%
SE	6	0.0%	0.3%	21	-16.0%	1.0%	102	-1.9%	5.0%	22	-4.3%	1.1%	1,895	-13.9%	92.6%

FW - IU Students Only

Minority Enrollment as Percent of Total



Matriculants by Campus

	Heads		Hours	
	#	% Change	#	% Change
BL	555	-48.6%	2,837.0	-46.3%
IN	879	7.3%	3,272.0	4.7%
EA	46	-32.4%	214.0	-19.2%
FW	209	60.8%	811.0	48.0%
KO	77	-9.4%	324.0	-13.8%
NW	176	33.3%	666.0	32.7%
SB	189	-9.1%	755.0	-9.9%
SE	147	8.9%	586.0	14.9%

Source Information

University Reporting & Research
 Poplars 017 - 018
 (812) 855 - 9893
<http://www.indiana.edu/~urr/>