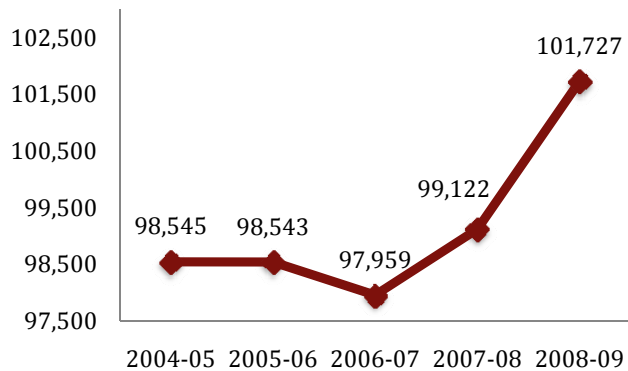
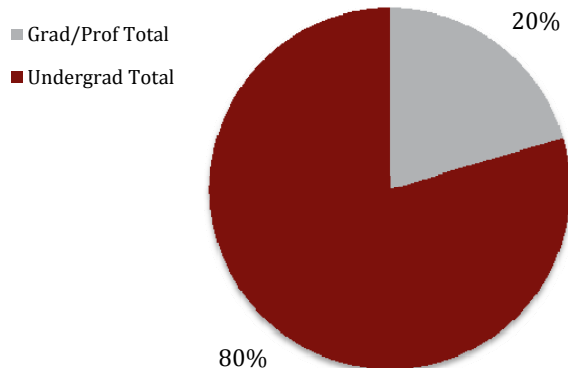
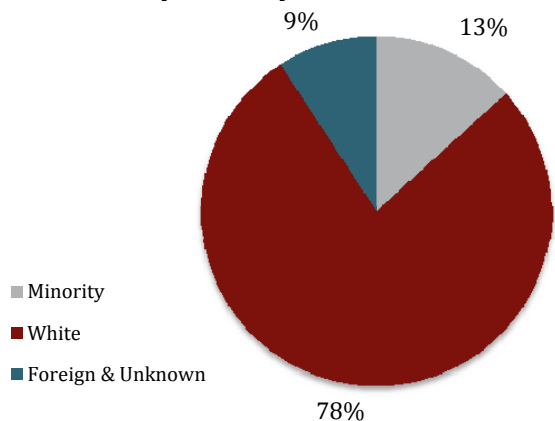


**IU Historical Enrollment
First Semester**

IU Enrollment By Level

IU Enrollment By Ethnicity

University Enrollment Summary

	Count	% of total	% change ¹
Headcount	101,727		2.6%
Credit Hours	1,183,076.5		3.3%
FTE	81,018.9		3.3%

Students By Level and Class

Undergrad Total	80,874	79.5%	3.0%
Degree-seeking	76,757	75.5%	2.7%
Non-Degree	4,117	4.0%	10.5%
Grad/Prof Total	20,853	20.5%	1.1%
Grad Degree-seeking	15,384	15.1%	3.1%
Prof Degree-seeking	3,551	3.5%	0.8%
Non-Degree	1,918	1.9%	-12.2%

Freshman	22,479	29.3%	1.2%
Sophomore	18,598	24.2%	0.2%
Junior	15,361	20.0%	6.2%
Senior	20,319	26.5%	4.0%

Undergraduates By Courseload²

FT-UG	61,405	80.0%	4.3%
PT-UG	15,352	20.0%	-3.5%

Sex

Male	44,244	43.5%	4.1%
Female	57,483	56.5%	1.5%

Ethnicity

African American	6,946	6.8%	2.6%
American Indian	338	0.3%	3.4%
Asian American	3,151	3.1%	9.5%
Hispanic	3,076	3.0%	7.2%
White	78,845	77.5%	1.1%
Foreign	5,748	5.7%	9.4%
Unknown	3,623	3.6%	19.2%

Residency

Resident	77,768	76.4%	1.4%
Non-Resident	23,959	23.6%	6.9%
Reciprocity ³	2,049	8.6%	5.7%

¹ Compared with First Semester, 2007-08

² Degree-seeking only

³ Portion of non-resident enrollments that are reciprocity

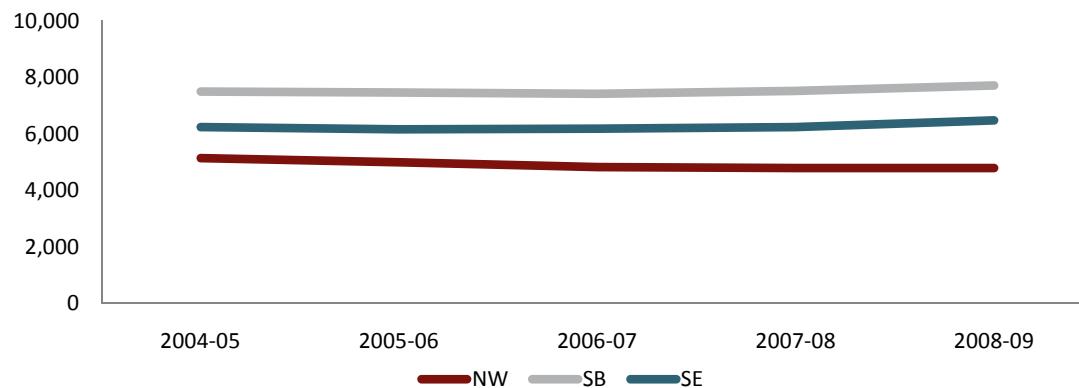
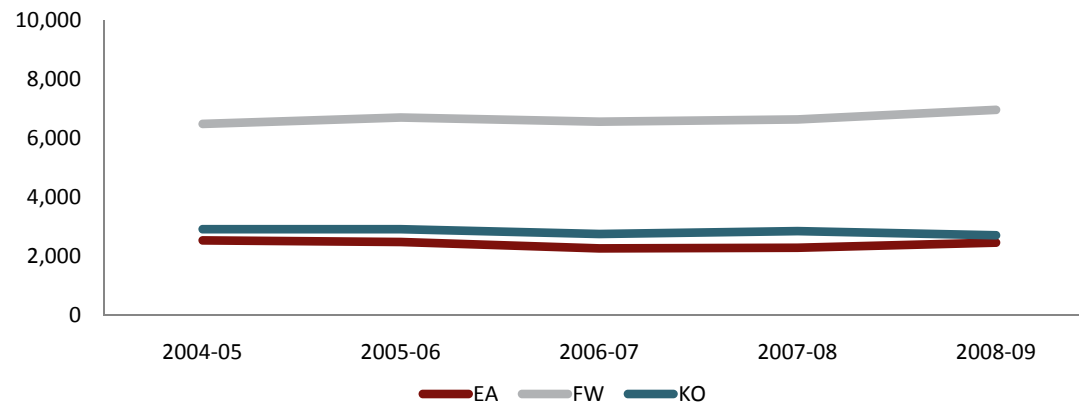
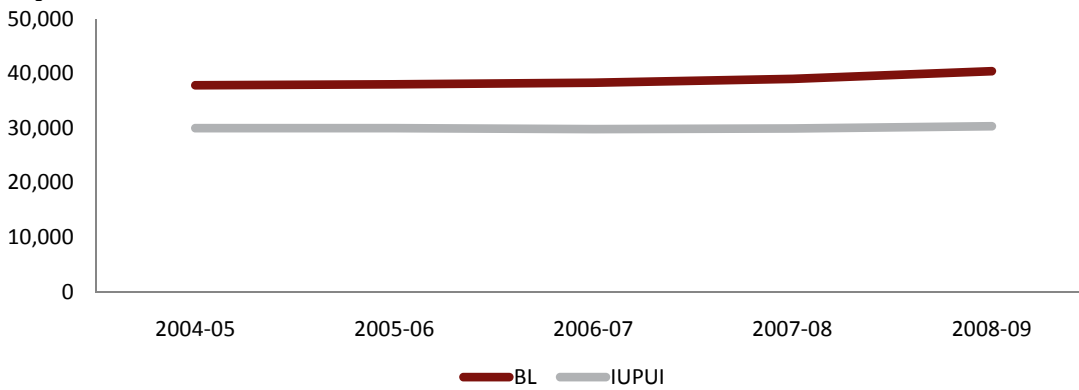
Campus Enrollment Summary

	Headcount			Credit Hours			FTE		
	Count	%	%	Count	%	%	Count	%	%
		of total	change ¹		of total	change ¹		of total	change ¹
Bloomington	40,354	39.7%	3.5%	544,236.5	46.0%	3.9%	37,443.1	46.2%	3.8%
Indianapolis	30,300	29.8%	1.5%	331,226.5	28.0%	2.7%	22,772.3	28.1%	2.8%
East	2,447	2.4%	8.0%	24,457.5	2.1%	8.6%	1,636.5	2.0%	8.7%
Fort Wayne*	6,948	6.8%	4.8%	70,966.0	6.0%	3.1%	4,780.5	5.9%	2.8%
Kokomo	2,690	2.6%	-5.1%	25,790.0	2.2%	-6.6%	1,735.2	2.1%	-6.4%
Northwest	4,794	4.7%	0.1%	48,736.0	4.1%	3.2%	3,314.1	4.1%	3.2%
South Bend	7,712	7.6%	2.6%	73,598.0	6.2%	3.6%	4,998.4	6.2%	3.4%
Southeast	6,482	6.4%	3.9%	64,066.0	5.4%	4.3%	4,338.9	5.4%	4.4%

¹ Compared with First Semester, 2007-08

* IU students only

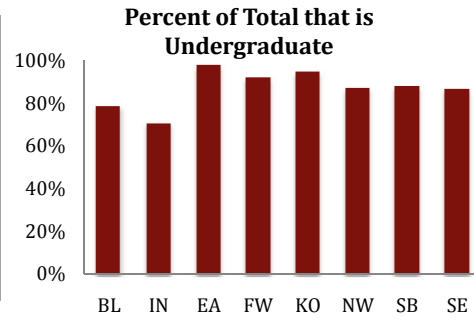
Campus Historical First Semester Enrollment



Campus Enrollment Summary

Level of Enrollment (including non-degree)

	Undergraduate			Graduate/Professional		
	% of campus		%	% of campus		%
	Count	total	change ¹	Count	total	change ¹
Bloomington	31,626	78.4%	4.1%	8,728	21.6%	1.5%
Indianapolis	21,423	70.7%	1.0%	8,877	29.3%	2.6%
East	2,388	97.6%	7.4%	59	2.4%	40.5%
Fort Wayne*	6,388	91.9%	7.3%	560	8.1%	-17.2%
Kokomo	2,540	94.4%	-5.8%	150	5.6%	7.9%
Northwest	4,168	86.9%	0.4%	626	13.1%	-2.2%
South Bend	6,756	87.6%	4.9%	956	12.4%	-11.2%
Southeast	5,585	86.2%	2.8%	897	13.8%	11.2%



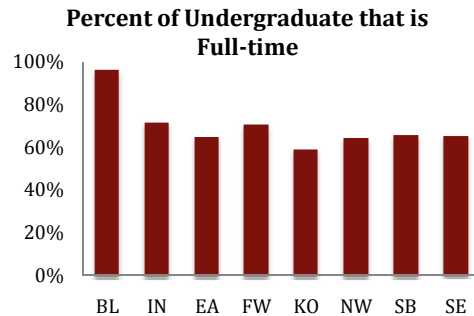
Undergraduates by Class[†]

	Freshman			Sophomore			Junior			Senior		
	% of campus		%	% of campus		%	% of campus		%	% of campus		%
	Count	total	change ¹	Count	total	change ¹	Count	total	change ¹	Count	total	change ¹
Bloomington	8,132	26.2%	1.0%	8,021	25.8%	1.9%	7,169	23.1%	9.1%	7,765	25.0%	7.2%
Indianapolis	5,145	25.2%	-1.2%	4,723	23.2%	1.4%	4,039	19.8%	3.9%	6,483	31.8%	1.6%
East	746	35.8%	-1.1%	501	24.1%	7.1%	324	15.6%	-0.6%	510	24.5%	19.7%
Fort Wayne*	2,171	31.2%	3.0%	1,295	18.6%	-4.4%	924	13.3%	8.5%	1,404	20.2%	2.5%
Kokomo	725	27.0%	-11.4%	476	17.7%	-27.2%	400	14.9%	1.5%	603	22.4%	15.7%
Northwest	1,501	31.3%	-0.3%	1,016	21.2%	0.4%	583	12.2%	-2.0%	874	18.2%	2.6%
South Bend	2,217	28.7%	3.8%	1,381	17.9%	3.1%	894	11.6%	5.1%	1,383	17.9%	-0.6%
Southeast	1,842	28.4%	13.4%	1,185	18.3%	-2.5%	1,028	15.9%	4.6%	1,297	20.0%	-3.4%

[†] Degree-seeking only

Undergraduate Enrollment Status[†]

	Full-time Undergrad			Part-time Undergrad		
	% of campus		%	% of campus		%
	Count	total	change ¹	Count	total	change ¹
Bloomington	30,006	96.5%	4.6%	1,081	3.5%	3.9%
Indianapolis	14,693	72.1%	3.3%	5,697	27.9%	-3.6%
East	1,355	65.1%	9.0%	726	34.9%	-0.7%
Fort Wayne*	4,101	70.8%	3.1%	1,693	29.2%	-0.8%
Kokomo	1,305	59.2%	-5.5%	899	40.8%	-10.6%
Northwest	2,559	64.4%	6.6%	1,415	35.6%	-9.6%
South Bend	3,875	66.0%	6.0%	2,000	34.0%	-3.1%
Southeast	3,511	65.6%	6.8%	1,841	34.4%	-2.1%



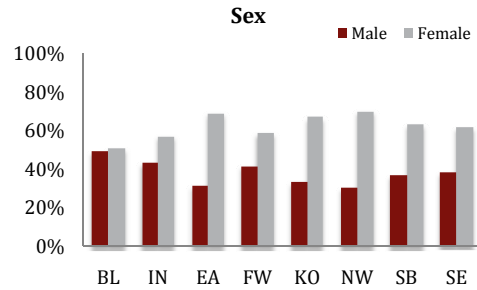
¹ Compared with First Semester, 2007-08

* IU students only

Campus Enrollment Summary

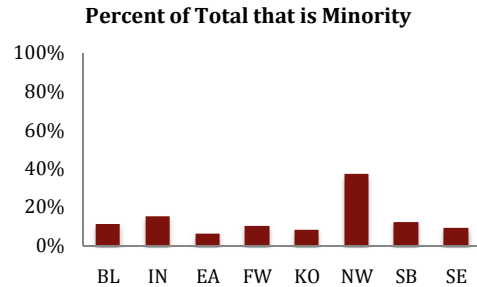
Sex

	Male			Female		
	Count	% of campus		Count	% of campus	
		total	change ¹		total	change ¹
Bloomington	19,899	49.3%	4.5%	20,455	50.7%	2.5%
Indianapolis	13,052	43.1%	3.9%	17,248	56.9%	-0.3%
East	770	31.5%	4.3%	1,677	68.5%	9.8%
Fort Wayne*	2,872	41.3%	6.4%	4,076	58.7%	3.7%
Kokomo	894	33.2%	1.7%	1,796	66.8%	-8.2%
Northwest	1,460	30.5%	-0.3%	3,334	69.5%	0.3%
South Bend	2,824	36.6%	1.4%	4,888	63.4%	3.3%
Southeast	2,473	38.2%	5.4%	4,009	61.8%	3.0%



Ethnicity

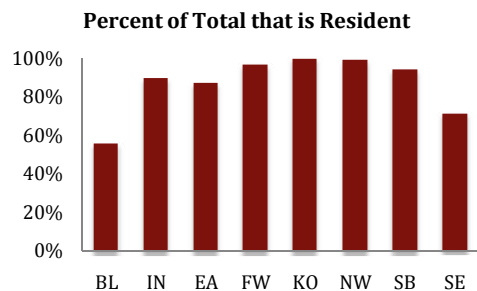
	Domestic Minority			Other		
	Count	% of campus		Count	% of campus	
		total	change ¹		total	change ¹
Bloomington	4,484	11.1%	8.1%	35,870	88.9%	3.0%
Indianapolis	4,599	15.2%	1.7%	25,701	84.8%	1.5%
East	157	6.4%	20.8%	2,290	93.6%	7.2%
Fort Wayne*	718	10.3%	13.1%	6,230	89.7%	3.9%
Kokomo	228	8.5%	11.2%	2,462	91.5%	-6.4%
Northwest	1,769	36.9%	-1.4%	3,025	63.1%	1.0%
South Bend	961	12.5%	4.6%	6,751	87.5%	2.3%
Southeast	595	9.2%	20.4%	5,887	90.8%	2.4%



	American Indian			Asian American			African American			Hispanic		
	Count	% of campus		Count	% of campus		Count	% of campus		Count	% of campus	
		total	change ¹		total	change ¹		total	change ¹		total	change ¹
Bloomington	116	0.3%	3.6%	1,572	3.9%	11.6%	1,749	4.3%	5.0%	1,047	2.6%	8.8%
Indianapolis	83	0.3%	-6.7%	1,155	3.8%	9.1%	2,630	8.7%	-0.8%	731	2.4%	1.0%
East	4	0.2%	-42.9%	15	0.6%	7.1%	99	4.0%	32.0%	39	1.6%	14.7%
Fort Wayne*	26	0.4%	30.0%	101	1.5%	0.0%	390	5.6%	17.8%	201	2.9%	9.8%
Kokomo	17	0.6%	-15.0%	31	1.2%	-6.1%	129	4.8%	21.7%	51	1.9%	10.9%
Northwest	28	0.6%	40.0%	88	1.8%	-1.1%	1,051	21.9%	-7.0%	602	12.6%	8.5%
South Bend	36	0.5%	9.1%	104	1.3%	-2.8%	504	6.5%	0.2%	317	4.1%	14.9%
Southeast	28	0.4%	7.7%	85	1.3%	28.8%	394	6.1%	25.9%	88	1.4%	-1.1%

Residency

	Resident			Non-resident		
	Count	% of campus		Count	% of campus	
		total	change ¹		total	change ¹
Bloomington	22,508	55.8%	1.7%	17,846	44.2%	5.8%
Indianapolis	27,151	89.6%	0.0%	3,149	10.4%	16.4%
East	2,127	86.9%	7.7%	320	13.1%	10.0%
Fort Wayne*	6,704	96.5%	5.2%	244	3.5%	-4.3%
Kokomo	2,676	99.5%	-5.1%	14	0.5%	-12.5%
Northwest	4,728	98.6%	0.1%	66	1.4%	-4.3%
South Bend	7,260	94.1%	3.1%	452	5.9%	-4.4%
Southeast	4,614	71.2%	2.5%	1,868	28.8%	7.3%



¹ Compared with First Semester, 2007-08

* IU students only